

Recombinant Mouse Dixdc1 protein, His & T7-tagged

Cat. No. Dixdc1-1838M Lot. No. (See product label)

SPECIFICATION

Product Overview	Recombinant Mouse Dixdc1 aa. (Ser513~Asn711 (Accession # Q80Y83)) fused with N-terminal His & T7 tag was produced in E. coli cells.
Species	Mouse
Source	E.coli
ProteinLength	Ser513~Asn711
Form	Freeze-dried powder
Molecular Mass	Predicted Molecular Mass: 26.2kDa
Endotoxin	<1.0EU per 1ug (determined by the LAL method)
Purity	>95%
Applications	SDS-PAGE; WB; ELISA; IP.
Stability	The thermal stability is described by the loss rate. The loss rate was determined by accelerated thermal degradation test, that is, incubate the protein at 37°C for 48h, and no obvious degradation and precipitation were observed. The loss rate is less than 5% within the expiration date under appropriate storage condition.
Storage	Avoid repeated freeze/thaw cycles. Store at 2-8°C for one month. Aliquot and store at

 Tel: 1-631-559-9269 1-516-512-3133

 Email: info@creative-biomart.com  Fax: 1-631-938-8127

 45-1 Ramsey Road, Shirley, NY 11967, USA

-80°C for 12 months.

Storage buffer Supplied as lyophilized form in PBS, pH7.4, containing 5% sucrose, 0.01% sarcosyl.

Reconstitution Reconstitute in sterile PBS, pH7.2-pH7.4.

Isoelectric Point 8

GENE INFORMATION

Gene Name [Dixdc1 DIX domain containing 1 \[Mus musculus \(house mouse\) \]](#)

Official Symbol [Dixdc1](#)

Synonyms Dixdc1; DIX domain containing 1; Ccd1; Ccd1CL; BC048182; mKIAA1735; Ccd1BbetaL; Ccd1Abeta1L; Ccd1BalphaL; Ccd1Aalpha1L; 4930563F16Rik; dixin; DIX domain-containing protein 1; coiled-coil protein DIX1; coiled-coil-DIX1

Gene ID [330938](#)

mRNA Refseq [NM_001311069.1](#)

Protein Refseq [NP_001297998.1](#)

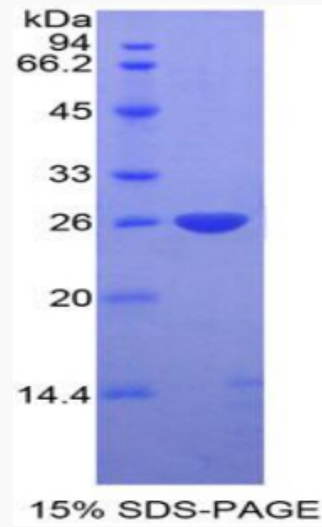
UniProt ID [Q80Y83](#)

 Tel: 1-631-559-9269 1-516-512-3133

 Email: info@creative-biomart.com  Fax: 1-631-938-8127

 45-1 Ramsey Road, Shirley, NY 11967, USA

SDS-PAGE



 Tel: 1-631-559-9269 1-516-512-3133

 Email: info@creative-biomart.com  Fax: 1-631-938-8127

 45-1 Ramsey Road, Shirley, NY 11967, USA