

## Recombinant Rat Dkk1 protein, His & GST-tagged

Cat. No. Dkk1-831R Lot. No. (See product label)

### SPECIFICATION

<b>Product Overview</b>	Recombinant Rat Dkk1 aa. (Val36~Asn260 (Accession # D3Z9J1)) fused with N-terminal His & GST tag was produced in E. coli cells.
<b>Species</b>	Rat
<b>Source</b>	E.coli
<b>ProteinLength</b>	Val36~Asn260
<b>Form</b>	Freeze-dried powder
<b>Molecular Mass</b>	Predicted Molecular Mass: 56.3kDa
<b>Endotoxin</b>	<1.0EU per 1g (determined by the LAL method)
<b>Purity</b>	>95%
<b>Characteristic</b>	The isoelectric point is 7.5.
<b>Applications</b>	SDS-PAGE; WB; ELISA; IP.
<b>Stability</b>	The thermal stability is described by the loss rate. The loss rate was determined by accelerated thermal degradation test, that is, incubate the protein at 37°C for 48h, and no obvious degradation and precipitation were observed. The loss rate is less than 5% within the expiration date under appropriate storage condition.

 Tel: 1-631-559-9269 1-516-512-3133

 Email: [info@creative-biomart.com](mailto:info@creative-biomart.com)  Fax: 1-631-938-8127

 45-1 Ramsey Road, Shirley, NY 11967, USA

**Storage** Avoid repeated freeze/thaw cycles. Store at 2-8°C for one month. Aliquot and store at -80°C for 12 months.

**Storage buffer** Supplied as lyophilized form in 20mM Tris, 500mM NaCl, pH8.0, containing 1mM EDTA, 1mM DTT, 0.01% sarcosyl, 5% trehalose, and preservative.

**Reconstitution** Reconstitute in ddH<sub>2</sub>O.

## GENE INFORMATION

**Gene Name** [Dkk1 dickkopf WNT signaling pathway inhibitor 1 \[ Rattus norvegicus \(Norway rat\) \]](#)

**Official Symbol** [Dkk1](#)

**Synonyms** dickkopf 1 homolog; dickkopf homolog 1; dickkopf-like protein 1; dickkopf-related protein 1

**Gene ID** [293897](#)

**mRNA Refseq** [NM\\_001106350.1](#)

**Protein Refseq** [NP\\_001099820.1](#)

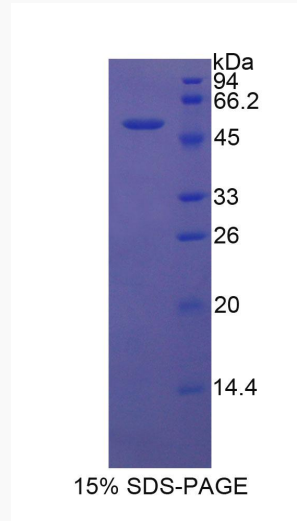
**UniProt ID** [D3Z9J1](#)

 Tel: 1-631-559-9269 1-516-512-3133

 Email: [info@creative-biomart.com](mailto:info@creative-biomart.com)  Fax: 1-631-938-8127

 45-1 Ramsey Road, Shirley, NY 11967, USA

**SDS-PAGE**



 Tel: 1-631-559-9269 1-516-512-3133

 Email: [info@creative-biomart.com](mailto:info@creative-biomart.com)  Fax: 1-631-938-8127

 45-1 Ramsey Road, Shirley, NY 11967, USA