

Recombinant Mouse Dkk1 Protein (Leu21-Leu230), C-His tagged

Cat. No. Dkk11-6810M **Lot. No.** (See product label)

SPECIFICATION

Product Overview	Recombinant mouse Dkk11 (Leu21-Leu230) fused with the C-terminal His tag was expressed in mammalian cells.
Species	Mouse
Source	Mammalian Cells
ProteinLength	Leu21-Leu230
Description	Predicted to enable co-receptor binding activity and receptor antagonist activity. Involved in negative regulation of testosterone biosynthetic process; penetration of zona pellucida; and positive regulation of apoptotic process. Acts upstream of or within positive regulation of fat cell differentiation. Located in acrosomal vesicle. Is expressed in several structures, including extraembryonic component and reproductive system. Orthologous to human DKKL1 (dickkopf like acrosomal protein 1).
Form	Lyophilized powder/frozen liquid
Molecular Mass	23.1 kDa
Purity	> 90 % as determined by SDS-PAGE
Notes	For research use only.

 Tel: 1-631-559-9269 1-516-512-3133

 Email: info@creative-biomart.com  Fax: 1-631-938-8127

 45-1 Ramsey Road, Shirley, NY 11967, USA

Storage	Use a manual defrost freezer and avoid repeated freeze thaw cycles. Store at 2 to 8 centigrade for one week. Store at -20 to -80 centigrade for twelve months from the date of receipt.
Storage Buffer	Supplied as solution form in PBS or lyophilized from PBS.
Reconstitution	Reconstitute in sterile water for a stock solution.
Shipping	They are shipped out with dry ice/blue ice unless customers require otherwise.

GENE INFORMATION

Gene Name	Dkk1 dickkopf-like 1 [<i>Mus musculus</i> (house mouse)]
Official Symbol	Dkk1
Synonyms	Dkk1; dickkopf-like 1; SGY; SGY1; mSgy; SGY-1; Soggy; dickkopf-like protein 1; protein soggy-1; soggy 1
Gene ID	50722
mRNA Refseq	NM_015789
Protein Refseq	NP_056604
UniProt ID	Q9QZL9

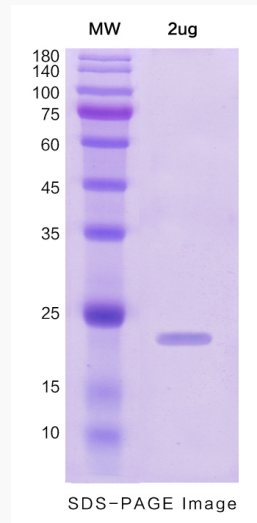
 Tel: 1-631-559-9269 1-516-512-3133

 Email: info@creative-biomart.com  Fax: 1-631-938-8127

 45-1 Ramsey Road, Shirley, NY 11967, USA



SDS-PAGE



Tel: 1-631-559-9269 1-516-512-3133

Email: info@creative-biomart.com Fax: 1-631-938-8127

45-1 Ramsey Road, Shirley, NY 11967, USA