

Recombinant Mouse Dlk1 protein, His & GST-tagged

Cat. No. Dlk1-1840M **Lot. No.** (See product label)

SPECIFICATION

Product Overview	Recombinant Mouse Dlk1 aa. (Ala24~Ser175 (Accession # Q09163)) fused with N-terminal His & GST tag was produced in E. coli cells.
Species	Mouse
Source	E.coli
ProteinLength	Ala24~Ser175
Form	Freeze-dried powder
Molecular Mass	Predicted Molecular Mass: 48.3kDa
Endotoxin	<1.0EU per 1ug (determined by the LAL method)
Purity	>95%
Applications	SDS-PAGE; WB; ELISA; IP.
Stability	The thermal stability is described by the loss rate. The loss rate was determined by accelerated thermal degradation test, that is, incubate the protein at 37°C for 48h, and no obvious degradation and precipitation were observed. The loss rate is less than 5% within the expiration date under appropriate storage condition.
Storage	Avoid repeated freeze/thaw cycles. Store at 2-8°C for one month. Aliquot and store at

 Tel: 1-631-559-9269 1-516-512-3133

 Email: info@creative-biomart.com  Fax: 1-631-938-8127

 45-1 Ramsey Road, Shirley, NY 11967, USA

-80°C for 12 months.

Storage buffer Supplied as lyophilized form in PBS, pH7.4, containing 5% trehalose, 0.01% sarcosyl.

Reconstitution Reconstitute in sterile PBS, pH7.2-pH7.4.

Isoelectric Point 5.6

GENE INFORMATION

Gene Name [Dlk1 delta-like 1 homolog \(Drosophila\) \[Mus musculus \(house mouse\) \]](#)

Official Symbol [Dlk1](#)

Synonyms Dlk1; delta-like 1 homolog (Drosophila); FA1; ZOG; pG2; Dlk1; Peg9; SCP1; DLK-1; Ly107; pref-1; AW742678; protein delta homolog 1; adipocyte differentiation inhibitor protein; fetal antigen 1; preadipocyte factor 1; stromal cell derived protein 1

Gene ID [13386](#)

mRNA Refseq [NM_010052.5](#)

Protein Refseq [NP_034182.2](#)

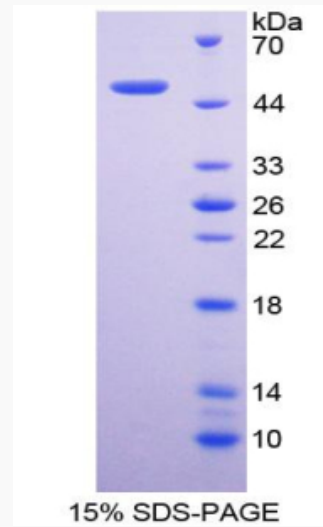
UniProt ID [Q09163](#)

 Tel: 1-631-559-9269 1-516-512-3133

 Email: info@creative-biomart.com  Fax: 1-631-938-8127

 45-1 Ramsey Road, Shirley, NY 11967, USA

SDS-PAGE



 Tel: 1-631-559-9269 1-516-512-3133

 Email: info@creative-biomart.com  Fax: 1-631-938-8127

 45-1 Ramsey Road, Shirley, NY 11967, USA