

## Recombinant Rat Dll4 protein, His-tagged

Cat. No. Dll4-1647R Lot. No. (See product label)

### SPECIFICATION

<b>Product Overview</b>	Recombinant Rat Dll4 aa. (Gly215~Ser331 (Accession # D3ZHH1)) fused with N-terminal His tag was produced in E. coli cells.
<b>Species</b>	Rat
<b>Source</b>	E.coli
<b>ProteinLength</b>	Gly215~Ser331
<b>Form</b>	Freeze-dried powder
<b>Molecular Mass</b>	Predicted Molecular Mass: 14.3kDa
<b>Endotoxin</b>	<1.0EU per 1ug (determined by the LAL method)
<b>Purity</b>	>95%
<b>Applications</b>	SDS-PAGE; WB; ELISA; IP.
<b>Stability</b>	The thermal stability is described by the loss rate. The loss rate was determined by accelerated thermal degradation test, that is, incubate the protein at 37°C for 48h, and no obvious degradation and precipitation were observed. The loss rate is less than 5% within the expiration date under appropriate storage condition.
<b>Storage</b>	Avoid repeated freeze/thaw cycles. Store at 2-8°C for one month. Aliquot and store at

 Tel: 1-631-559-9269 1-516-512-3133

 Email: [info@creative-biomart.com](mailto:info@creative-biomart.com)  Fax: 1-631-938-8127

 45-1 Ramsey Road, Shirley, NY 11967, USA

-80°C for 12 months.

**Storage buffer**

Supplied as lyophilized form in PBS, pH7.4, containing 1mM DTT, 5% trehalose, 0.01% sarcosyl and preservative.

**Reconstitution**

Reconstitute in sterile PBS, pH7.2-pH7.4.

**Isoelectric Point**

6

## GENE INFORMATION

**Gene Name**

Dll4 delta like canonical Notch ligand 4 [ *Rattus norvegicus* (Norway rat) ]

**Official Symbol**

Dll4

**Synonyms**

Dll4; delta like canonical Notch ligand 4; delta-like protein 4; delta-like 4; delta4; drosophila Delta homolog 4

**Gene ID**

311332

**mRNA Refseq**

XM\_006234765.2

**Protein Refseq**

XP\_006234827.1

**UniProt ID**

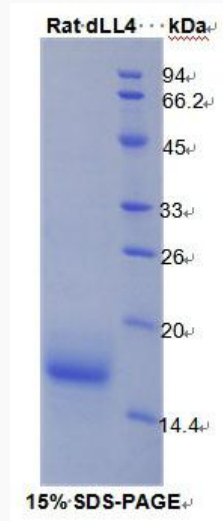
D3ZHH1

 Tel: 1-631-559-9269 1-516-512-3133

 Email: [info@creative-biomart.com](mailto:info@creative-biomart.com)  Fax: 1-631-938-8127

 45-1 Ramsey Road, Shirley, NY 11967, USA

SDS-PAGE



 Tel: 1-631-559-9269 1-516-512-3133

 Email: [info@creative-biomart.com](mailto:info@creative-biomart.com)  Fax: 1-631-938-8127

 45-1 Ramsey Road, Shirley, NY 11967, USA