

## Recombinant Rat Dlst protein, His&Myc-tagged

Cat. No. Dlst-4256R Lot. No. (See product label)

### SPECIFICATION

<b>Product Overview</b>	Recombinant Rat Dlst protein(Q01205)(69-454aa), fused with N-terminal His tag and C-terminal Myc tag, was expressed in E.coli.
<b>Species</b>	Rat
<b>Source</b>	E.coli
<b>ProteinLength</b>	69-454aa
<b>Form</b>	If the delivery form is liquid, the default storage buffer is Tris/PBS-based buffer, 5%-50% glycerol. If the delivery form is lyophilized powder, the buffer before lyophilization is Tris/PBS-based buffer, 6% Trehalose, pH 8.0.
<b>Molecular Mass</b>	48.9 kDa
<b>Purity</b>	Greater than 85% as determined by SDS-PAGE.
<b>Storage</b>	Store at -20°C/-80°C upon receipt, aliquoting is necessary for mutiple use. Avoid repeated freeze-thaw cycles.
<b>Reconstitution</b>	We recommend that this vial be briefly centrifuged prior to opening to bring the contents to the bottom. Please reconstitute protein in deionized sterile water to a concentration of 0.1-1.0 mg/mL. We recommend to add 5-50% of glycerol (final concentration) and aliquot for long-term storage at -20°C/-80°C.

 Tel: 1-631-559-9269 1-516-512-3133

 Email: [info@creative-biomart.com](mailto:info@creative-biomart.com)  Fax: 1-631-938-8127

 45-1 Ramsey Road, Shirley, NY 11967, USA

**AA Sequence**

NDVITVQTPAFAESVTEGDVRWEKAVGDAVAEDEVVCEIETDKTSVQVPSANGIIE  
 ALLVPDGGKVEGGTPLFTLRKTGAAPAKAKPAEAPATAYKAAPEAPAAPPPVAPVP  
 TQMPVPSPSQPPSSKPVSAIKPTAAPPLAEAGAAKGLRSEHREKMNRMRQRIAQR  
 LKEAQNTCAMLTTFNEVDMSNIQEMRARHKDAFLKKNLKLGFMSAFVKASAFALQ  
 EQPVVNAVIDDATKEVVYRDYIDISVAVATPRGLVVPVIRNVETMNYADIERTINELGE  
 KARKNELAIEDMDGGTFTISNGGVFGSLFGTPIINPPQSAILGMHGIFDRPVAVGGKV  
 EVRPMMYVALTYDHRLIDGREAVTFLRKIKAAVEDPRVLLLDL

**GENE INFORMATION**
**Gene Name**

[Dlst dihydrolipoamide S-succinyltransferase \(E2 component of 2-oxo-glutarate complex\) \[ Rattus norvegicus \]](#)

**Official Symbol**

[Dlst](#)

**Synonyms**

DLST; dihydrolipoamide S-succinyltransferase (E2 component of 2-oxo-glutarate complex); dihydrolipoyllysine-residue succinyltransferase component of 2-oxoglutarate dehydrogenase complex, mitochondrial; E2; E2K; OGDC-E2; 2-oxoglutarate dehydrogenase complex component E2; dihydrolipoamide succinyltransferase component of 2-oxoglutarate dehydrogenase complex; MGC95077;

**Gene ID**

[299201](#)

**mRNA Refseq**

[NM\\_001006981](#)

**Protein Refseq**

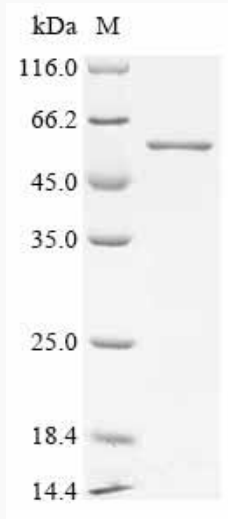
[NP\\_001006982](#)

 Tel: 1-631-559-9269 1-516-512-3133

 Email: [info@creative-biomart.com](mailto:info@creative-biomart.com)  Fax: 1-631-938-8127

 45-1 Ramsey Road, Shirley, NY 11967, USA

**SDS-PAGE**



 Tel: 1-631-559-9269 1-516-512-3133

 Email: [info@creative-biomart.com](mailto:info@creative-biomart.com)  Fax: 1-631-938-8127

 45-1 Ramsey Road, Shirley, NY 11967, USA