

Recombinant Rat Dmd protein, His-tagged

Cat. No. Dmd-5632R **Lot. No.** (See product label)

SPECIFICATION

Product Overview	Recombinant Rat Dmd protein(P11530)(1-240aa), fused with C-terminal His tag, was expressed in Yeast.
Species	Rat
Source	Yeast
ProteinLength	1-240aa
Tag	C-His
Form	If the delivery form is liquid, the default storage buffer is Tris/PBS-based buffer, 5%-50% glycerol. If the delivery form is lyophilized powder, the buffer before lyophilization is Tris/PBS-based buffer, 6% Trehalose, pH 8.0.
Molecular Mass	29.1 kDa
Purity	Greater than 90% as determined by SDS-PAGE.
Storage	Store at -20°C/-80°C upon receipt, aliquoting is necessary for mutiple use. Avoid repeated freeze-thaw cycles.
Reconstitution	We recommend that this vial be briefly centrifuged prior to opening to bring the contents to the bottom. Please reconstitute protein in deionized sterile water to a concentration of 0.1-1.0 mg/mL. We recommend to add 5-50% of glycerol (final

 Tel: 1-631-559-9269 1-516-512-3133

 Email: info@creative-biomart.com  Fax: 1-631-938-8127

 45-1 Ramsey Road, Shirley, NY 11967, USA

concentration) and aliquot for long-term storage at -20°C/-80°C.

AA Sequence

MLWWEVEEDCYEREDVQKKTFTKWINAQFSKFGKQHIDNLFSDLQDGKRLLDLLEG
 LTGQKLPKEKGSTRVHALNNVNKALQVLQKNNVDLVNIGSTDIVDGNHKLTLGLIWN
 ILHWQVKVMKTIMAGLQQTNSEKILLSWVRESTRNYPQVNVLNFTSSWSDGLALN
 ALIHSRPPDLFDWNSVVSQQSATQRLEHAFNIAKCQLGIEKLLDPEDVATTYPDKKSI
 LMYITSLFQVLP

GENE INFORMATION

Gene Name [Dmd dystrophin \[Rattus norvegicus \]](#)

Official Symbol [Dmd](#)

Synonyms DMD; dystrophin; RNDNADMD1; apodystrophin-3; apodystrophin-I; dystrophin, muscular dystrophy; dystrophin transcript variant Dp71e; RATDMD; DNADMD1;

Gene ID [24907](#)

mRNA Refseq [NM_001005244](#)

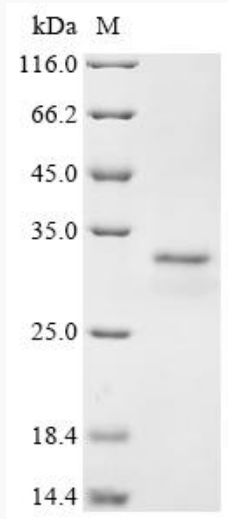
Protein Refseq [NP_001005244](#)

 Tel: 1-631-559-9269 1-516-512-3133

 Email: info@creative-biomart.com  Fax: 1-631-938-8127

 45-1 Ramsey Road, Shirley, NY 11967, USA

SDS-PAGE



 Tel: 1-631-559-9269 1-516-512-3133

 Email: info@creative-biomart.com  Fax: 1-631-938-8127

 45-1 Ramsey Road, Shirley, NY 11967, USA