

# Active Recombinant Mouse Dipeptidylpeptidase 7, His-tagged

**Cat. No.** Dpp7-416M    **Lot. No.** (See product label)

## SPECIFICATION

<b>Product Overview</b>	Recombinant mouse Dpp7 protein was expressed in Murine myeloma cell line, NS0-derived, with a C-terminal 10-His tag. Asp34-Arg506
<b>Species</b>	Mouse
<b>Source</b>	Mammalian Cells
<b>Protein Length</b>	34-506 a.a.
<b>Description</b>	The protein encoded by this gene is a post-proline cleaving aminopeptidase expressed in quiescent lymphocytes. The resting lymphocytes are maintained through suppression of apoptosis, a state which is disrupted by inhibition of this novel serine protease. The enzyme has strong sequence homology with prolylcarboxypeptidase and is active at both acidic and neutral pH.
<b>Form</b>	Lyophilized from a 0.2 µm filtered solution in Tris and NaCl.
<b>N-terminal Sequence</b>	Asp34
<b>Molecular Weight</b>	54 kDa
<b>Activity</b>	Measured by its ability to cleave the fluorogenic peptide substrate, Gly-Pro-7-amido-4-methylcoumarin (GP-AMC). The specific activity is > 2,500 pmoles/min/µg, as measured under the described conditions. See Activity Assay Protocol.

 Tel: 1-631-559-9269    1-516-512-3133

 Email: [info@creative-biomart.com](mailto:info@creative-biomart.com)     Fax: 1-631-938-8127

 45-1 Ramsey Road, Shirley, NY 11967, USA

<b>Endotoxin Level</b>	<1.0 EU per 1 µg of the protein by the LAL method.
<b>Purity</b>	>95%, by SDS-PAGE under reducing conditions and visualized by silver stain.
<b>Reconstitution</b>	Reconstitute at 200µg/mL in 25 mM Tris and 150 mM NaCl, pH 7.5.
<b>Storage</b>	Use a manual defrost freezer and avoid repeated freeze-thaw cycles. 6 months from date of receipt, -20 to -70 °C as supplied. 3 months, -20 to -70 °C under sterile conditions after reconstitution.

## GENE INFORMATION

<b>Gene Name</b>	Dpp7 dipeptidylpeptidase 7 [ <i>Mus musculus</i> ]
<b>Official Symbol</b>	Dpp7
<b>Synonyms</b>	Dpp7; dipeptidylpeptidase 7; QPP; Dpp2; DPPII; OTTMUSP00000012875; dipeptidylpeptidase 2; dipeptidyl-peptidase 2; dipeptidyl peptidase II; dipeptidyl-peptidasell; dipeptidyl aminopeptidase II; quiescent cell proline dipeptidase; Ec 3.4.14.2; dipeptidylpeptidase 7
<b>Gene ID</b>	83768
<b>mRNA Refseq</b>	NM_031843
<b>Protein Refseq</b>	NP_114031
<b>UniProt ID</b>	Q9ET22
<b>Chromosome Location</b>	2

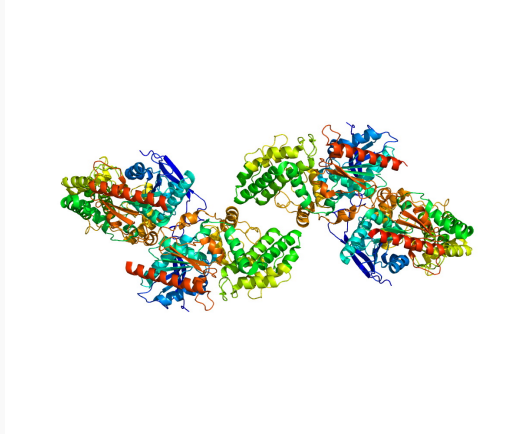
 Tel: 1-631-559-9269 1-516-512-3133

 Email: [info@creative-biomart.com](mailto:info@creative-biomart.com)  Fax: 1-631-938-8127

 45-1 Ramsey Road, Shirley, NY 11967, USA

**Function**

aminopeptidase activity; dipeptidyl-peptidase activity; hydrolase activity; peptidase activity; serine-type peptidase activity

**Rendering based  
on PDB 3JYH.**

 Tel: 1-631-559-9269 1-516-512-3133

 Email: [info@creative-biomart.com](mailto:info@creative-biomart.com)  Fax: 1-631-938-8127

 45-1 Ramsey Road, Shirley, NY 11967, USA