

Recombinant Mouse Dpt Protein, His/GST-tagged

Cat. No. Dpt-674M Lot. No. (See product label)

SPECIFICATION

Product Overview	Recombinant Mouse Dpt(Gln29~Glu197) fused with His/GST tag at N-terminal was expressed in E. coli.
Species	Mouse
Source	E.coli
ProteinLength	Gln29~Glu197
Form	PBS, pH7.4, containing 0.01% SKL, 1mM DTT, 5% Trehalose and Proclin300.
Molecular Mass	47.4kDa
Endotoxin	<1.0EU per 1ug (determined by the LAL method)
Purity	> 95%
Applications	Positive Control; Immunogen; SDS-PAGE; WB. If bio-activity of the protein is needed, please check active protein
Stability	The thermal stability is described by the loss rate. The loss rate was determined by accelerated thermal degradation test, that is, incubate the protein at 37 centigrade for 48h, and no obvious degradation and precipitation were observed. The loss rate is less than 5% within the expiration date under appropriate storage condition.

 Tel: 1-631-559-9269 1-516-512-3133

 Email: info@creative-biomart.com  Fax: 1-631-938-8127

 45-1 Ramsey Road, Shirley, NY 11967, USA

Storage	Avoid repeated freeze/thaw cycles. Store at 2-8 centigrade for one month. Aliquot and store at -80 centigrade for 12 months.
----------------	--

Reconstitution	Reconstitute in PBS or others
-----------------------	-------------------------------

GENE INFORMATION

Gene Name	Dpt dermatopontin [Mus musculus]
------------------	------------------------------------

Official Symbol	Dpt
------------------------	-----

Synonyms	DPT; dermatopontin; TRAMP; early quiescence protein 1; early quiescence protein-1; tyrosine-rich acidic matrix protein; Eq1; EQ-1; 1810032B19Rik; 5033416F05Rik;
-----------------	--

Gene ID	56429
----------------	-------

mRNA Refseq	NM_019759
--------------------	-----------

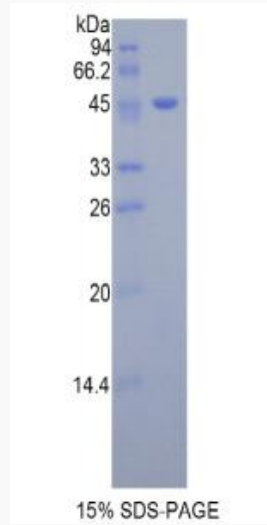
Protein Refseq	NP_062733
-----------------------	-----------

UniProt ID	Q9QZZ6
-------------------	--------

 Tel: 1-631-559-9269 1-516-512-3133

 Email: info@creative-biomart.com  Fax: 1-631-938-8127

 45-1 Ramsey Road, Shirley, NY 11967, USA



Tel: 1-631-559-9269 1-516-512-3133

Email: info@creative-biomart.com Fax: 1-631-938-8127

45-1 Ramsey Road, Shirley, NY 11967, USA