

Recombinant Mouse Drd3 Protein, His&GST-tagged

Cat. No. Drd3-1382M **Lot. No.** (See product label)

SPECIFICATION

Product Overview	Recombinant Mouse Drd3 Protein (Met1-Asn65) with N-His&GST tag was expressed in E. coli.
Species	Mouse
Source	E.coli
ProteinLength	Met1-Asn65
Description	Enables dopamine neurotransmitter receptor activity, coupled via Gi/Go. Involved in behavioral response to cocaine and regulation of neurotransmitter uptake. Acts upstream of or within several processes, including regulation of blood pressure; regulation of dopamine receptor signaling pathway; and response to alkaloid. Located in plasma membrane. Is active in dopaminergic synapse. Is expressed in several structures, including brain; exocrine gland; genitourinary system; gut; and sensory organ. Used to study restless legs syndrome. Human ortholog(s) of this gene implicated in Parkinson's disease; essential tremor; essential tremor 1; and schizophrenia. Orthologous to human DRD3 (dopamine receptor D3).
Form	Freeze-dried powder
Molecular Mass	Predicted Molecular Mass: 36.9 kDa Accurate Molecular Mass: 39 kDa
Purity	> 80%

 Tel: 1-631-559-9269 1-516-512-3133

 Email: info@creative-biomart.com  Fax: 1-631-938-8127

 45-1 Ramsey Road, Shirley, NY 11967, USA

Applications	Positive Control; Immunogen; SDS-PAGE; WB.
Stability	The thermal stability is described by the loss rate. The loss rate was determined by accelerated thermal degradation test, that is, incubate the protein at 37 centigrade for 48h, and no obvious degradation and precipitation were observed. The loss rate is less than 5% within the expiration date under appropriate storage condition.
Storage	Avoid repeated freeze/thaw cycles. Store at 2-8 centigrade for one month. Aliquot and store at -80 centigrade for 12 months.
Storage Buffer	20mM Tris, 150mM NaCl, pH8.0, containing 1mM EDTA, 1mM DTT, 0.01% SKL, 5% Trehalose and Proclin300.
Reconstitution	Reconstitute in 20mM Tris, 150mM NaCl (pH8.0) to a concentration of 0.1-1.0 mg/mL. Do not vortex.

GENE INFORMATION

Gene Name	Drd3 dopamine receptor D3 [Mus musculus (house mouse)]
Official Symbol	Drd3
Synonyms	DRD3; dopamine receptor D3; D(3) dopamine receptor; D3 receptor; dopamine receptor 3; dopamine D3 receptor; D3R;
Gene ID	13490
mRNA Refseq	NM_007877
Protein Refseq	NP_031903

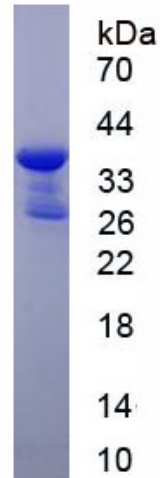
 Tel: 1-631-559-9269 1-516-512-3133

 Email: info@creative-biomart.com  Fax: 1-631-938-8127

 45-1 Ramsey Road, Shirley, NY 11967, USA

UniProt ID

P30728



 Tel: 1-631-559-9269 1-516-512-3133

 Email: info@creative-biomart.com  Fax: 1-631-938-8127

 45-1 Ramsey Road, Shirley, NY 11967, USA