

Recombinant Mouse Dvl1 protein, His & T7-tagged

Cat. No. Dvl1-1683M Lot. No. (See product label)

SPECIFICATION

| | |
|-------------------------|---|
| Product Overview | Recombinant Mouse Dvl1 aa. (Arg150~Ser332 (Accession # P51141)) fused with N-terminal His & T7 tag was produced in E. coli cells. |
| Species | Mouse |
| Source | E.coli |
| ProteinLength | Arg150~Ser332 |
| Description | The protein encoded by this gene is a member of the Dishevelled family of proteins. These proteins have an N-terminal Dishevelled/Axin domain, a Dishevelled, EGL-10, Plextrin domain, a central PDZ domain, and a C-terminal domain of approximately 200 amino acids. They regulate both canonical and non-canonical Wnt signaling as well as planar cell polarity pathways. Mice deficient for this gene are viable and fertile but display reduced social interaction. Alternative splicing results in multiple transcript variants. |
| Form | Freeze-dried powder |
| Molecular Mass | Predicted Molecular Mass: 24.0kDa |
| Endotoxin | <1.0EU per 1ug (determined by the LAL method) |
| Purity | >95% |

 Tel: 1-631-559-9269 1-516-512-3133

 Email: info@creative-biomart.com  Fax: 1-631-938-8127

 45-1 Ramsey Road, Shirley, NY 11967, USA

| | |
|--------------------------|---|
| Applications | SDS-PAGE; WB; ELISA; IP. |
| Stability | The thermal stability is described by the loss rate. The loss rate was determined by accelerated thermal degradation test, that is, incubate the protein at 37°C for 48h, and no obvious degradation and precipitation were observed. The loss rate is less than 5% within the expiration date under appropriate storage condition. |
| Storage | Avoid repeated freeze/thaw cycles. Store at 2-8°C for one month. Aliquot and store at -80°C for 12 months. |
| Storage buffer | Supplied as lyophilized form in PBS, pH7.4, containing 5% sucrose, 0.01% sarcosyl. |
| Reconstitution | Reconstitute in sterile PBS, pH7.2-pH7.4. |
| Isoelectric Point | 8.1 |

GENE INFORMATION

| | |
|------------------------|--|
| Gene Name | Dvl1 dishevelled segment polarity protein 1 [<i>Mus musculus</i> (house mouse)] |
| Official Symbol | Dvl1 |
| Synonyms | Dvl1; dishevelled segment polarity protein 1; Dvl; mKIAA4029; segment polarity protein dishevelled homolog DVL-1; DSH homolog 1; dishevelled, dsh homolog 1; dishevelled-1 |
| Gene ID | 13542 |
| mRNA Refseq | NM_010091.5 |
| Protein Refseq | NP_034221.3 |

 Tel: 1-631-559-9269 1-516-512-3133

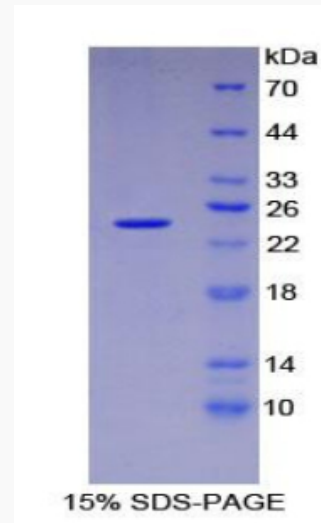
 Email: info@creative-biomart.com  Fax: 1-631-938-8127

 45-1 Ramsey Road, Shirley, NY 11967, USA

UniProt ID

P51141

SDS-PAGE



 Tel: 1-631-559-9269 1-516-512-3133

 Email: info@creative-biomart.com  Fax: 1-631-938-8127

 45-1 Ramsey Road, Shirley, NY 11967, USA