

Recombinant Human E2F1 Protein, Myc/DDK-tagged, C13 and N15-labeled

Cat. No. E2F1-1406H **Lot. No.** (See product label)

SPECIFICATION

Product Overview	E2F1 MS Standard C13 and N15-labeled recombinant protein (NP_005216) with a C-terminal MYC/DDK tag, was expressed in HEK293 cells.
Species	Human
Source	HEK293
Description	<p>The protein encoded by this gene is a member of the E2F family of transcription factors. The E2F family plays a crucial role in the control of cell cycle and action of tumor suppressor proteins and is also a target of the transforming proteins of small DNA tumor viruses. The E2F proteins contain several evolutionally conserved domains found in most members of the family. These domains include a DNA binding domain, a dimerization domain which determines interaction with the differentiation regulated transcription factor proteins (DP), a transactivation domain enriched in acidic amino acids, and a tumor suppressor protein association domain which is embedded within the transactivation domain. This protein and another 2 members, E2F2 and E2F3, have an additional cyclin binding domain. This protein binds preferentially to retinoblastoma protein pRB in a cell-cycle dependent manner. It can mediate both cell proliferation and p53-dependent/independent apoptosis.</p>
Molecular Mass	46.7 kDa
AA Sequence	MALAGAPAGGPCAPALEALLGAGALRLLDSSQIVIISAAQDASAPPAPTGPAAPAAG

 Tel: 1-631-559-9269 1-516-512-3133

 Email: info@creative-biomart.com  Fax: 1-631-938-8127

 45-1 Ramsey Road, Shirley, NY 11967, USA

PCDPDLLLFATPQAPRPTPSAPRPALGRPPVKRRLDLETDHQYLAESSGPARGRGR
 HPGKGVKSPGEKSRYETSLNLTTRKRFLELLSHSADGVVDLNWAAEVLKVQKRRIYDI
 TNVLEGIQLIAKKSKNHIQWLGSHTTVGVGGRLEGLTQDLRQLQESEQQLDHLMNIC
 TTQLRLLSEDTDSQRLAYVTCQDLRSIADPAEQMVMVIKAPPETQLQAVDSSNFQI
 SLKSKQGPIDVFLCPEETVGGISPGKTPSQEVTSEENRATDSATIVSPPPSSPPSSL
 TTDPQSLLSLEQEPLLSRMGSLRAPVDEDRLSPLVAADSLLEHVREDFSGLLPEEFI
 SLSPHEALDYHFGLEEGEGIRDLFDCDFGDLTPLDFTRTRPLEQKLISEEDLAANDI
 LDYKDDDDKV

Purity > 80% as determined by SDS-PAGE and Coomassie blue staining

Stability Stable for 3 months from receipt of products under proper storage and handling conditions.

Storage Store at -80 centigrade. Avoid repeated freeze-thaw cycles.

Concentration 50 µg/mL as determined by BCA

Storage Buffer 100 mM glycine, 25 mM Tris-HCl, pH 7.3.

GENE INFORMATION

Gene Name E2F1 E2F transcription factor 1 [Homo sapiens (human)]

Official Symbol E2F1

Synonyms E2F1; E2F transcription factor 1; RBBP3; transcription factor E2F1; RBP3; PBR3; RBAP-1; RBBP-3; PRB-binding protein E2F-1; retinoblastoma-binding protein 3; retinoblastoma-associated protein 1; E2F-1; RBAP1;

Gene ID 1869

 Tel: 1-631-559-9269 1-516-512-3133

 Email: info@creative-biomart.com  Fax: 1-631-938-8127

 45-1 Ramsey Road, Shirley, NY 11967, USA

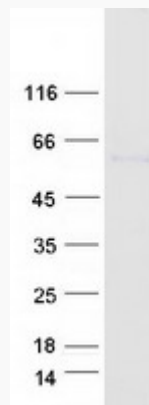
mRNA Refseq [NM_005225](#)

Protein Refseq [NP_005216](#)

MIM [189971](#)

UniProt ID [Q01094](#)

SDS-PAGE



 Tel: 1-631-559-9269 1-516-512-3133

 Email: info@creative-biomart.com  Fax: 1-631-938-8127

 45-1 Ramsey Road, Shirley, NY 11967, USA