

Recombinant Human E2F1 Protein (Val88-Phe437), N-His tagged

Cat. No. E2F1-2016H **Lot. No.** (See product label)

SPECIFICATION

Product Overview	Recombinant human E2F1 (Val88-Phe437) fused with N-terminal His tag was expressed in <i>E. coli</i> .
Species	Human
Source	<i>E. coli</i>
ProteinLength	Val88-Phe437
Description	Transcription activator that binds DNA cooperatively with DP proteins through the E2 recognition site, 5'-TTTC[CG]CGC-3' found in the promoter region of a number of genes whose products are involved in cell cycle regulation or in DNA replication. The DRTF1/E2F complex functions in the control of cell-cycle progression from G1 to S phase. E2F1 binds preferentially RB1 in a cell-cycle dependent manner. It can mediate both cell proliferation and TP53/p53-dependent apoptosis. Blocks adipocyte differentiation by binding to specific promoters repressing CEBPA binding to its target gene promoters. Positively regulates transcription of RRP1B.
Form	Lyophilized powder/frozen liquid
Molecular Mass	40.93 kDa
Purity	>90% as determined by SDS-PAGE

 Tel: 1-631-559-9269 1-516-512-3133

 Email: info@creative-biomart.com  Fax: 1-631-938-8127

 45-1 Ramsey Road, Shirley, NY 11967, USA

Notes	For research use only.
Storage	Use a manual defrost freezer and avoid repeated freeze thaw cycles. Store at 2 to 8 centigrade for one week. Store at -20 to -80 centigrade for twelve months from the date of receipt.
Storage Buffer	Lyophilized from PBS, pH 7.4, 0.02% NLS, 1mM EDTA, 4% trehalose, 1% mannitol.
Reconstitution	Reconstitute in sterile water for a stock solution.
Shipping	They are shipped out with dry ice/blue ice unless customers require otherwise.
GENE INFORMATION	
Gene Name	E2F1 E2F transcription factor 1 [Homo sapiens (human)]
Official Symbol	E2F1
Synonyms	E2F1; E2F transcription factor 1; RBBP3; transcription factor E2F1; RBP3; PBR3; RBAP-1; RBBP-3; PRB-binding protein E2F-1; retinoblastoma-binding protein 3; retinoblastoma-associated protein 1; E2F-1; RBAP1;
Gene ID	1869
mRNA Refseq	NM_005225
Protein Refseq	NP_005216
MIM	189971
UniProt ID	Q01094

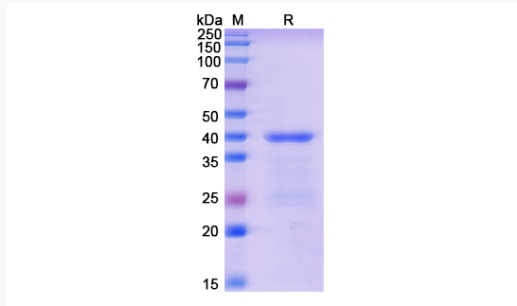
 Tel: 1-631-559-9269 1-516-512-3133

 Email: info@creative-biomart.com  Fax: 1-631-938-8127

 45-1 Ramsey Road, Shirley, NY 11967, USA



SDS-PAGE



Tel: 1-631-559-9269 1-516-512-3133

Email: info@creative-biomart.com Fax: 1-631-938-8127

45-1 Ramsey Road, Shirley, NY 11967, USA