

Recombinant Human E2F1 protein, His-tagged

Cat. No. E2F1-5332H Lot. No. (See product label)

SPECIFICATION

Product Overview	Recombinant Human E2F1 protein(Q01094)(1-437aa), fused with N-terminal His tag, was expressed in E.coli.
Species	Human
Source	E.coli
ProteinLength	1-437a.a.
Tag	His
Form	If the delivery form is liquid, the default storage buffer is Tris/PBS-based buffer, 5%-50% glycerol. If the delivery form is lyophilized powder, the buffer before lyophilization is Tris/PBS-based buffer, 6% Trehalose, pH 8.0.
Molecular Mass	53.0 kDa
Purity	Greater than 85% as determined by SDS-PAGE.
Storage	Store at -20°C/-80°C upon receipt, aliquoting is necessary for mutiple use. Avoid repeated freeze-thaw cycles.
Reconstitution	We recommend that this vial be briefly centrifuged prior to opening to bring the contents to the bottom. Please reconstitute protein in deionized sterile water to a concentration of 0.1-1.0 mg/mL.We recommend to add 5-50% of glycerol (final

 Tel: 1-631-559-9269 1-516-512-3133

 Email: info@creative-biomart.com  Fax: 1-631-938-8127

 45-1 Ramsey Road, Shirley, NY 11967, USA

concentration) and aliquot for long-term storage at -20°C/-80°C.

AA Sequence

```
MALAGAPAGGPCAPALEALLGAGALRLLDSSQIVIISAAQDASAPPAPTGPAAPAAG
PCDPDLLLFATPQAPRPTPSAPRPALGRPPVKRRRLDLETDHQYLAESSGPARGRGR
HPGKGVKSPGEKSRYETSLNLTTRFLELLSHSADGVVDLNWAAEVLKVQKRRIYDI
TNVLEGIQLIAKSKNHIQWLGSHTTVGVGGRLEGLTQDLRQLQESEQQLDHLMNIC
TTQLRLLSEDTDSQRLAYVTCQDLRSIADPAEQMVMVIKAPPETQLQAVDSSNFQI
SLKSKQGPIDVFLCPEETVGGISPGKTPSQEVTSEENRATDSATIVSPPPSSPPSSL
TTDPSQSLLSLEQEPLLSRMGSLRAPVDEDRLSPLVAADSLLEHVREDFSGLLPEEFI
SLSPPEALDYHFGLEEGEGIRDLDLFCDFGDLTPLDF
```

GENE INFORMATION

Gene Name E2F1 E2F transcription factor 1 [Homo sapiens]

Official Symbol E2F1

Synonyms E2F1; E2F transcription factor 1; RBBP3; transcription factor E2F1; RBP3; PBR3; RBAP-1; RBBP-3; PRB-binding protein E2F-1; retinoblastoma-binding protein 3; retinoblastoma-associated protein 1; E2F-1; RBAP1;

Gene ID 1869

mRNA Refseq NM_005225

Protein Refseq NP_005216

MIM 189971

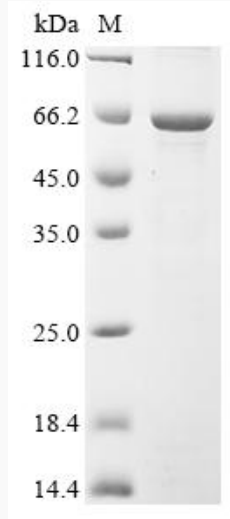
UniProt ID Q01094

 Tel: 1-631-559-9269 1-516-512-3133

 Email: info@creative-biomart.com  Fax: 1-631-938-8127

 45-1 Ramsey Road, Shirley, NY 11967, USA

SDS-PAGE



 Tel: 1-631-559-9269 1-516-512-3133

 Email: info@creative-biomart.com  Fax: 1-631-938-8127

 45-1 Ramsey Road, Shirley, NY 11967, USA