

## Recombinant Human E2F4 protein, His-tagged

Cat. No. E2F4-12248H Lot. No. (See product label)

### SPECIFICATION

<b>Product Overview</b>	Recombinant Human E2F4 protein(NP_001941)(1-413 aa), fused to N-termina His-tag, was expressed in E.coli.
<b>Species</b>	Human
<b>Source</b>	E.coli
<b>ProteinLength</b>	1-413 aa
<b>Description</b>	<p>The protein encoded by this gene is a member of the E2F family of transcription factors. The E2F family plays a crucial role in the control of cell cycle and action of tumor suppressor proteins and is also a target of the transforming proteins of small DNA tumor viruses. The E2F proteins contain several evolutionally conserved domains found in most members of the family. These domains include a DNA binding domain, a dimerization domain which determines interaction with the differentiation regulated transcription factor proteins (DP), a transactivation domain enriched in acidic amino acids, and a tumor suppressor protein association domain which is embedded within the transactivation domain. This protein binds to all three of the tumor suppressor proteins pRB, p107 and p130, but with higher affinity to the last two. It plays an important role in the suppression of proliferation-associated genes, and its gene mutation and increased expression may be associated with human cancer.</p>
<b>Form</b>	The purified protein was Lyophilized from sterile PBS (58mM Na <sub>2</sub> HPO <sub>4</sub> ,17mM

 Tel: 1-631-559-9269 1-516-512-3133

 Email: [info@creative-biomart.com](mailto:info@creative-biomart.com)  Fax: 1-631-938-8127

 45-1 Ramsey Road, Shirley, NY 11967, USA



	NaH <sub>2</sub> PO <sub>4</sub> , 68mM NaCl, pH7.). 5 % trehalose and 5 % mannitol are added as protectants before lyophilization.
<b>Bio-activity</b>	Not tested.
<b>AA Sequence</b>	MAEAGPQAPPPPGTPSRHEKSLGLLTTKFVSLLEAKDGVLDLKLAAADTLAVRQKR RIYDITNVLEGIGLIEKSKNSIQWKGVGPGCNTREIADKLIELKAEIEELQQREQELD QHKVWVQQSIRNVTEDEVQNSCLAYVTHEDICRCFAGDTLLAIRAPSGTSLEVPIPEG LNGQKKYQIHLKSVSGPIEVLLVNKEAWSSPPVAVPVPPEDLLQSPSAVSTPPPLP KPALAQSQEASRPNSPQLTPTAVPGSAEVQGMAGPAAEITVSGGPGTDSKDSGELS SLPLGPTTLDTRPLQSSALLDSSSSSSSSSSSSNSNSSSSSSGPNPSTSFEPKADPT GVLELPKELSEIFDPTRECMSELLEELMSSEVFAPLLRLSPPPGDHDYIYNLDESEG VCDLFDVPVLNL
<b>Purity</b>	85%, by SDS-PAGE with Coomassie Brilliant Blue staining.
<b>Stability</b>	Store for up to 12 months at -20°C to -80°C as lyophilized powder.
<b>Storage</b>	Short-term storage: Store at 2-8°C for (1-2 weeks). Long-term storage: Aliquot and store at -20°C to -80°C for up to 3 months, buffer containing 50% glycerol is recommended for reconstitution. Avoid repeat freeze-thaw cycles.
<b>Reconstitution</b>	Reconstitute at 0.25 g/μl in 200 μl sterile water for short-term storage. Reconstitution with 200 μl 50% glycerol solution is recommended for longer term storage (see Stability and Storage for more details). If a different concentration is needed for your purposes please adjust the reconstitution volume as required (please note: the ion concentration of the final solution will vary according to the volume used). Note: Centrifuge vial before opening. When reconstituting, gently pipet and wash

Tel: 1-631-559-9269 1-516-512-3133

Email: [info@creative-biomart.com](mailto:info@creative-biomart.com) Fax: 1-631-938-8127

45-1 Ramsey Road, Shirley, NY 11967, USA

down the sides of the vial to ensure full recovery of the protein into solution.

**Shipping**

The product is shipped at ambient temperature. Upon receipt, store it immediately at the recommended temperature (see below).

**GENE INFORMATION**

<b>Gene Name</b>	E2F4 E2F transcription factor 4, p107/p130-binding [ Homo sapiens ]
<b>Official Symbol</b>	E2F4
<b>Synonyms</b>	E2F4; E2F transcription factor 4, p107/p130-binding; transcription factor E2F4; E2F 4; p107/p130-binding protein; E2F-4;
<b>Gene ID</b>	1874
<b>mRNA Refseq</b>	NM_001950
<b>Protein Refseq</b>	NP_001941
<b>MIM</b>	600659
<b>UniProt ID</b>	Q16254

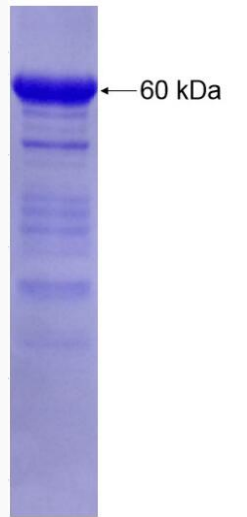
 Tel: 1-631-559-9269 1-516-512-3133

 Email: [info@creative-biomart.com](mailto:info@creative-biomart.com)  Fax: 1-631-938-8127

 45-1 Ramsey Road, Shirley, NY 11967, USA



SDS-PAGE of E2F4-  
12248H



Tel: 1-631-559-9269 1-516-512-3133

Email: [info@creative-biomart.com](mailto:info@creative-biomart.com) Fax: 1-631-938-8127

45-1 Ramsey Road, Shirley, NY 11967, USA