

Recombinant Human E2F7 Protein, GST-tagged

Cat. No. E2F7-3010H Lot. No. (See product label)

SPECIFICATION

Product Overview	Human E2F7 partial ORF (NP_976328.1, 801 a.a. - 910 a.a.) recombinant protein with GST-tag at N-terminal.
Species	Human
Source	Wheat Germ
Description	E2F transcription factors, such as E2F7, play an essential role in the regulation of cell cycle progression (Di Stefano et al., 2003 [PubMed 14633988]).[supplied by OMIM, May 2008]
Molecular Mass	37.84 kDa
AA Sequence	VVNPKSSTLPSADPQLQSQPSLNLSPVMSRSHSVVQQPESPVYVGHVPSVVKLHQ SPVPVTPKSIQRTHRETFKTPGSLGDPVLKRRERNQSRNTSSAQRRLLEIPSGGA
Applications	Enzyme-linked Immunoabsorbent Assay Western Blot (Recombinant protein) Antibody Production Protein Array
Notes	Best use within three months from the date of receipt of this protein.
Storage	Store at -80 centigrade. Aliquot to avoid repeated freezing and thawing.

 Tel: 1-631-559-9269 1-516-512-3133

 Email: info@creative-biomart.com  Fax: 1-631-938-8127

 45-1 Ramsey Road, Shirley, NY 11967, USA

Storage Buffer 50 mM Tris-HCl, 10 mM reduced Glutathione, pH=8.0 in the elution buffer.

GENE INFORMATION

Gene Name E2F7 E2F transcription factor 7 [Homo sapiens]

Official Symbol E2F7

Synonyms E2F7; E2F transcription factor 7; transcription factor E2F7; E2F-7; FLJ12981;

Gene ID 144455

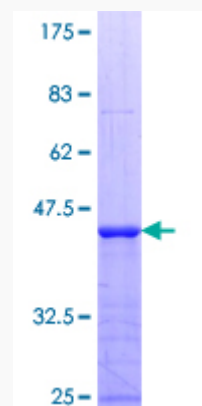
mRNA Refseq NM_203394

Protein Refseq NP_976328

MIM 612046

UniProt ID Q96AV8

**Quality Control
Testing**



12.5% SDS-PAGE Stained with Coomassie Blue.

 Tel: 1-631-559-9269 1-516-512-3133

 Email: info@creative-biomart.com  Fax: 1-631-938-8127

 45-1 Ramsey Road, Shirley, NY 11967, USA