

Recombinant Human EAF2 Protein, GST-tagged

Cat. No. EAF2-3014H **Lot. No.** (See product label)

SPECIFICATION

Product Overview	Human EAF2 full-length ORF (NP_060926.2, 1 a.a. - 260 a.a.) recombinant protein with GST-tag at N-terminal.
Species	Human
Source	Wheat Germ
Description	EAF2 (ELL Associated Factor 2) is a Protein Coding gene. Diseases associated with EAF2 include Eaf and Childhood Leukemia. Among its related pathways are Gene Expression and Formation of HIV elongation complex in the absence of HIV Tat. GO annotations related to this gene include RNA polymerase II regulatory region sequence-specific DNA binding and transcriptional activator activity, RNA polymerase II transcription regulatory region sequence-specific binding. An important paralog of this gene is EAF1.
Molecular Mass	55.2 kDa
AA Sequence	MNSAAGFSLDRRERVVLKLGESFEKQPRCAFHTVRYDFKPAIDTSSEGYLEVGE EQVTITLPNIEGSTPPVTVFKGSKKPYLKECILINHDTGECRLEKLSSNITVKKTRVEG SSKIYRKEQQQQMWNSARTPNLVKHSPSEDKMSPASPIDDIERELKAEASLMDQ MSSCDSSSDSKSSSSSSSESSSDSEDEDCKSSTSDTGNCVSGHPTMTQYRIPDID ASHNFRDNSGLLMNTRLRNDLQLSESGSDSD
Applications	Enzyme-linked Immunoabsorbent Assay Western Blot (Recombinant protein)

 Tel: 1-631-559-9269 1-516-512-3133

 Email: info@creative-biomart.com  Fax: 1-631-938-8127

 45-1 Ramsey Road, Shirley, NY 11967, USA

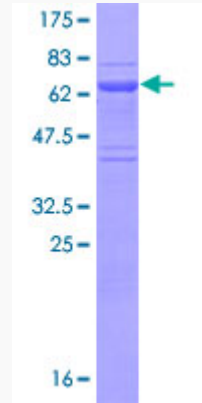
	Antibody Production Protein Array
Notes	Best use within three months from the date of receipt of this protein.
Storage	Store at -80 centigrade. Aliquot to avoid repeated freezing and thawing.
Storage Buffer	50 mM Tris-HCl, 10 mM reduced Glutathione, pH=8.0 in the elution buffer.
GENE INFORMATION	
Gene Name	EAF2 ELL associated factor 2 [Homo sapiens (human)]
Official Symbol	EAF2
Synonyms	EAF2; ELL associated factor 2; ELL Associated Factor 2; Testosterone-Regulated Apoptosis Inducer And Tumor Suppressor Protein; TRAITS; ELL-Associated Factor 2; BM040; U19; ELL-associated factor 2; testosterone-regulated apoptosis inducer and tumor suppressor protein
Gene ID	55840
mRNA Refseq	NM_001320041
Protein Refseq	NP_001306970
MIM	607659
UniProt ID	Q96CJ1

 Tel: 1-631-559-9269 1-516-512-3133

 Email: info@creative-biomart.com  Fax: 1-631-938-8127

 45-1 Ramsey Road, Shirley, NY 11967, USA

**Quality Control
Testing**



12.5% SDS-PAGE Stained with Coomassie Blue.

 Tel: 1-631-559-9269 1-516-512-3133

 Email: info@creative-biomart.com  Fax: 1-631-938-8127

 45-1 Ramsey Road, Shirley, NY 11967, USA