

Recombinant Human EAF2 Protein, Myc/DDK-tagged, C13 and N15-labeled

Cat. No. EAF2-6527H **Lot. No.** (See product label)

SPECIFICATION

Product Overview	EAF2 MS Standard C13 and N15-labeled recombinant protein (NP_060926) with a C-terminal MYC/DDK tag, was expressed in HEK293 cells.
Species	Human
Source	HEK293
Description	EAF2 (ELL Associated Factor 2) is a Protein Coding gene. Diseases associated with EAF2 include Eaf. Among its related pathways are Chromatin Regulation / Acetylation and Gene Expression. Gene Ontology (GO) annotations related to this gene include RNA polymerase II regulatory region sequence-specific DNA binding and DNA-binding transcription activator activity, RNA polymerase II-specific. An important paralog of this gene is EAF1.
Molecular Mass	28.8 kDa
AA Sequence	MNSAAGFSLDRRERVLKLGESFEKQPRCAFHTVRYDFKPA SIDTSSEGYLEVGE EQVTITLPNIEGSTPPVTVFKGSKKPYLKECILIINHDTGECRLEKLSSNITVKKTRVEG SSKIYRKEQQQQMWNSARTPNLVKHSPSEDKMSPASPIDDIERELKAEASLMDQ MSSCDSSSDSKSSSSSSSEDSSEDEDCKSSTSDTGNCVSGHPTMTQYRIPDID ASHNFRDNSGLLMNTLRNDLQLSESGSDSDTRTRPLEQKLISEEDLAANDILDYK DDDDKV
Purity	> 80% as determined by SDS-PAGE and Coomassie blue staining

 Tel: 1-631-559-9269 1-516-512-3133

 Email: info@creative-biomart.com  Fax: 1-631-938-8127

 45-1 Ramsey Road, Shirley, NY 11967, USA

Stability	Stable for 3 months from receipt of products under proper storage and handling conditions.
Storage	Store at -80 centigrade. Avoid repeated freeze-thaw cycles.
Concentration	50 µg/mL as determined by BCA
Storage Buffer	100 mM glycine, 25 mM Tris-HCl, pH 7.3.

GENE INFORMATION

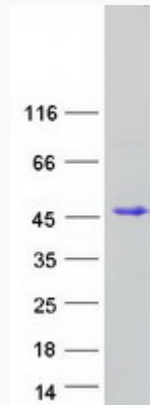
Gene Name	EAF2 ELL associated factor 2 [Homo sapiens (human)]
Official Symbol	EAF2
Synonyms	EAF2; ELL associated factor 2; U19; BM040; TRAITS; ELL-associated factor 2; testosterone-regulated apoptosis inducer and tumor suppressor protein
Gene ID	55840
mRNA Refseq	NM_018456
Protein Refseq	NP_060926
MIM	607659
UniProt ID	Q96CJ1

 Tel: 1-631-559-9269 1-516-512-3133

 Email: info@creative-biomart.com  Fax: 1-631-938-8127

 45-1 Ramsey Road, Shirley, NY 11967, USA

SDS-PAGE



 Tel: 1-631-559-9269 1-516-512-3133

 Email: info@creative-biomart.com  Fax: 1-631-938-8127

 45-1 Ramsey Road, Shirley, NY 11967, USA