

Recombinant Human EBAG9 Protein, GST-tagged

Cat. No. EBAG9-3017H Lot. No. (See product label)

SPECIFICATION

Product Overview	Human EBAG9 full-length ORF (AAH17729, 1 a.a. - 213 a.a.) recombinant protein with GST-tag at N-terminal.
Species	Human
Source	Wheat Germ
Description	<p>This gene was identified as an estrogen-responsive gene. Regulation of transcription by estrogen is mediated by estrogen receptor, which binds to the estrogen-responsive element found in the 5'-flanking region of this gene. The encoded protein is a tumor-associated antigen that is expressed at high frequency in a variety of cancers. Alternate splicing results in multiple transcript variants. A pseudogene of this gene has been defined on chromosome 10. [provided by RefSeq, Jul 2013]</p>
Molecular Mass	49.17 kDa
AA Sequence	<p>MAITQFRLFKFCTCLATVFSFLKRLICRSGRGRKLSGDQITLPTTVDYSSVPKQTDVE EWTSWDEDAPTSVKIEGGNGNVATQQNSLEQLEPDYFKDMTPTIRKTQKIVIKKREP LNFGIPDGSTGFSSRLAATQDLPFHQSSSELGDLDTWQENTNAWEEEEEDAAWQAE VLRQQKLADREKRAAEQQRKKMEKEAQRLMKKEQNKIGVKLS</p>
Applications	<p>Enzyme-linked Immunoabsorbent Assay Western Blot (Recombinant protein) Antibody Production Protein Array</p>

 Tel: 1-631-559-9269 1-516-512-3133

 Email: info@creative-biomart.com  Fax: 1-631-938-8127

 45-1 Ramsey Road, Shirley, NY 11967, USA

Notes	Best use within three months from the date of receipt of this protein.
Storage	Store at -80 centigrade. Aliquot to avoid repeated freezing and thawing.
Storage Buffer	50 mM Tris-HCl, 10 mM reduced Glutathione, pH=8.0 in the elution buffer.

GENE INFORMATION

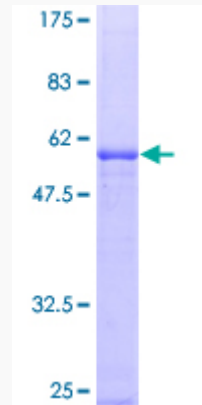
Gene Name	EBAG9 estrogen receptor binding site associated, antigen, 9 [Homo sapiens]
Official Symbol	EBAG9
Synonyms	EBAG9; estrogen receptor binding site associated, antigen, 9; receptor-binding cancer antigen expressed on SiSo cells; EB9; RCAS1; cancer associated surface antigen; cancer-associated surface antigen RCAS1; estrogen receptor-binding fragment-associated gene 9 protein; PDAF;
Gene ID	9166
mRNA Refseq	NM_004215
Protein Refseq	NP_004206
MIM	605772
UniProt ID	O00559

 Tel: 1-631-559-9269 1-516-512-3133

 Email: info@creative-biomart.com  Fax: 1-631-938-8127

 45-1 Ramsey Road, Shirley, NY 11967, USA

**Quality Control
Testing**



12.5% SDS-PAGE Stained with Coomassie Blue.

 Tel: 1-631-559-9269 1-516-512-3133

 Email: info@creative-biomart.com  Fax: 1-631-938-8127

 45-1 Ramsey Road, Shirley, NY 11967, USA