

## Recombinant Human EBF1 Protein, GST-tagged

Cat. No. EBF1-3019H Lot. No. (See product label)

### SPECIFICATION

<b>Product Overview</b>	Human EBF1 full-length ORF ( AAH38805, 1 a.a. - 591 a.a.) recombinant protein with GST-tag at N-terminal.
<b>Species</b>	Human
<b>Source</b>	Wheat Germ
<b>Description</b>	EBF1 (Early B-Cell Factor 1) is a Protein Coding gene. Diseases associated with EBF1 include Fetal Erythroblastosis. Among its related pathways are Regulation of lipid metabolism by Peroxisome proliferator-activated receptor alpha (PPARalpha) and Adipogenesis. GO annotations related to this gene include transcription factor activity, sequence-specific DNA binding and C2H2 zinc finger domain binding. An important paralog of this gene is EBF3.
<b>Molecular Mass</b>	90.75 kDa
<b>AA Sequence</b>	MFGIQESIQRSGSSMKEEP LGSGMNAV RTWMQGAGVLDANTAAQSGVGLARAHFE KQPPSNLRKSNFFHFVLALYDRQQPVEIERTAFVGFVEKEKEANSEKTNNGIHYRL QLLYSNGIRTEQDFYVRLIDSMTKQAI VYEGQDKNPEMCRVLLTHEIMCSRCCDKKS CGNRNETPSDPVIIDRFFSKFFLKCNQNCLKNAGNPRDMRRFQVVVSTTVNVDGHV LAVSDNMFVHNSKHGRRARRLD PSEGTPSYLEHATPCIKAI SPSEGWTTGGATVIII GDNFFDGLQVIFGTMLVWSELITPHAIRVQT PPRHIPGVVEVTL SYKSKQFCKGTPG RFIYTALNEPTIDYGFQRLQKVIPRHPGDPERLPKEVILKRAADLVEALYGMPHNNQE IILKRAADIAEALYSVPRNHNQLPALANTS VHAGMMGVNSFSGQLAVNVSEASQATN

 Tel: 1-631-559-9269 1-516-512-3133

 Email: [info@creative-biomart.com](mailto:info@creative-biomart.com)  Fax: 1-631-938-8127

 45-1 Ramsey Road, Shirley, NY 11967, USA

QGFTRNSSSVSPHGYVPSTTPQQTNYSVTTSMNGYGSAAMSNLGGSPFLNGSA  
 ANSPYAIVPSSPTMASSTSLPSNCSSTSSGIFSFSPANMVS AVKQKSAFAPVVRPQTS  
 PPPTCTSTNGNSLQAISGMIVPPM

<b>Applications</b>	Enzyme-linked Immunoabsorbent Assay Western Blot (Recombinant protein) Antibody Production Protein Array
<b>Notes</b>	Best use within three months from the date of receipt of this protein.
<b>Storage</b>	Store at -80 centigrade. Aliquot to avoid repeated freezing and thawing.
<b>Storage Buffer</b>	50 mM Tris-HCl, 10 mM reduced Glutathione, pH=8.0 in the elution buffer.

## GENE INFORMATION

<b>Gene Name</b>	EBF1 early B-cell factor 1 [ Homo sapiens ]
<b>Official Symbol</b>	EBF1
<b>Synonyms</b>	EBF1; early B-cell factor 1; early B cell factor , EBF; transcription factor COE1; OLF1; OE-1; olfactory neuronal transcription factor 1; Collier, Olf and EBF transcription factor 1; EBF; COE1; O/E-1; FLJ39389; FLJ41763;
<b>Gene ID</b>	1879
<b>mRNA Refseq</b>	NM_024007
<b>Protein Refseq</b>	NP_076870

 Tel: 1-631-559-9269 1-516-512-3133

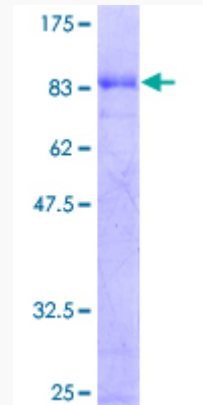
 Email: [info@creative-biomart.com](mailto:info@creative-biomart.com)  Fax: 1-631-938-8127

 45-1 Ramsey Road, Shirley, NY 11967, USA

**MIM** 164343

**UniProt ID** Q9UH73

**Quality Control  
Testing**



12.5% SDS-PAGE Stained with Coomassie Blue.

 Tel: 1-631-559-9269 1-516-512-3133

 Email: [info@creative-biomart.com](mailto:info@creative-biomart.com)  Fax: 1-631-938-8127

 45-1 Ramsey Road, Shirley, NY 11967, USA