

## Active Recombinant Human EBI3 Protein (Arg21-Lys229), C-His tagged, Animal-free, Carrier-free

Cat. No. EBI3-06H Lot. No. (See product label)

### SPECIFICATION

|                         |  |
|-------------------------|--|
| <b>Product Overview</b> | Recombinant Human EBI3 Protein (Arg21-Lys229) with C-His tag was expressed in E. coli and Animal-free as well as Carrier-free.   |
| <b>Species</b>          | Human  |
| <b>Source</b>           | E.coli   |
| <b>ProteinLength</b>    | Arg21-Lys229   |
| <b>Description</b>      | Interleukin 27 EBI3 (IL-27 EI3) predicts a molecular mass of 23.4 kDa. IL-27 is a heterodimeric cytokine that is encoded by Epstein-Barr virus-induced gene 3 (EBI3) and IL-27p28. It is expressed by antigen presenting cells and interacts with a specific cell-surface receptor complex known as IL-27 receptor (IL-27R). |
| <b>Form</b>             | Lyophilized  |
| <b>Bio-activity</b>     | Measure by its ability to induce TF-1 cells proliferation using a concentration range of 20-200 ng/mL.   |
| <b>Molecular Mass</b>   | The protein has a calculated MW of 24.25 kDa.<br>The protein migrates as 25 kDa under reducing condition (SDS-PAGE analysis).  |
| <b>Endotoxin</b>        | < 0.1 EU/μg of the protein by the LAL method.  |

 Tel: 1-631-559-9269 1-516-512-3133

 Email: [info@creative-biomart.com](mailto:info@creative-biomart.com)  Fax: 1-631-938-8127

 45-1 Ramsey Road, Shirley, NY 11967, USA

|                       |   |
|-----------------------|---|
| <b>Purity</b>         | >95% as determined by SDS-PAGE analysis.  |
| <b>Storage</b>        | This product is stable after storage at:<br>-20 centigrade for 12 months in lyophilized state from date of receipt.<br>-20 or -80 centigrade for 1 month under sterile conditions after reconstitution.<br>Avoid repeated freeze/thaw cycles. |
| <b>Storage Buffer</b> | Lyophilized from a 0.2 µm filtered solution of PBS, pH 8.0.   |
| <b>Reconstitution</b> | It is recommended to reconstitute the lyophilized protein in sterile H2O to a concentration not less than 200 µg/mL and incubate the stock solution for at least 20 min to ensure sufficient re-dissolved.                                    |
| <b>Shipping</b>       | The product is shipped with polar packs. Upon receipt, store it immediately at -20 centigrade or lower for long term storage.   |

## GENE INFORMATION

|                        |  |
|------------------------|--|
| <b>Gene Name</b>       | EBI3 Epstein-Barr virus induced 3 [ Homo sapiens (human) ]   |
| <b>Official Symbol</b> | EBI3   |
| <b>Synonyms</b>        | EBI3; Epstein-Barr virus induced 3; interleukin-27 subunit beta; IL27 subunit; IL35 subunit; cytokine receptor; IL-27 subunit beta; EBV-induced gene 3 protein; Epstein-Barr virus induced gene 3; epstein-Barr virus-induced gene 3 protein; IL27B; IL-27B; |
| <b>Gene ID</b>         | 10148  |
| <b>mRNA Refseq</b>     | NM_005755  |
| <b>Protein Refseq</b>  | NP_005746  |

 Tel: 1-631-559-9269 1-516-512-3133

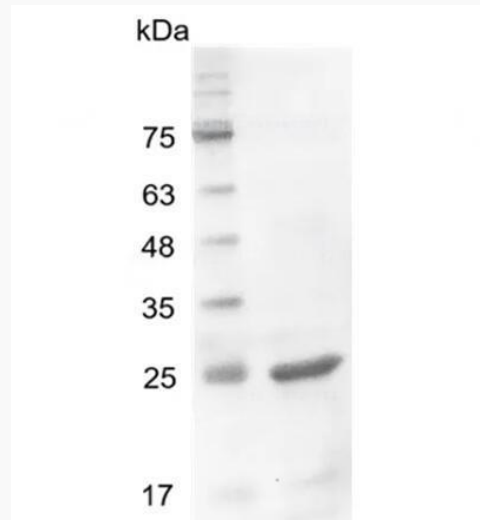
 Email: [info@creative-biomart.com](mailto:info@creative-biomart.com)  Fax: 1-631-938-8127

 45-1 Ramsey Road, Shirley, NY 11967, USA

**MIM** 605816

**UniProt ID** Q14213

**SDS-PAGE analysis  
of recombinant  
human IL-27 (EBI3).**



 Tel: 1-631-559-9269 1-516-512-3133

 Email: [info@creative-biomart.com](mailto:info@creative-biomart.com)  Fax: 1-631-938-8127

 45-1 Ramsey Road, Shirley, NY 11967, USA