

Recombinant Human ECE1 Protein, Myc/DDK-tagged, C13 and N15-labeled

Cat. No. ECE1-445H **Lot. No.** (See product label)

SPECIFICATION

Product Overview	ECE1 MS Standard C13 and N15-labeled recombinant protein (NP_001106820) with a C-terminal MYC/DDK tag, was expressed in HEK293 cells.
Species	Human
Source	HEK293
Description	The protein encoded by this gene is involved in proteolytic processing of endothelin precursors to biologically active peptides. Mutations in this gene are associated with Hirschsprung disease, cardiac defects and autonomic dysfunction. Alternatively spliced transcript variants encoding different isoforms have been noted for this gene.
Molecular Mass	86.8 kDa
AA Sequence	<pre> MEALRESVLHLALQMSTYKRATLDEEDLVDSLSEGDAYPNGLQVNFHSPRSGQRC WAARTQVEKRLVVLVLLAAGLVACLAALGIQYQTRSPSVCLSEACVSVTSSILSSM DPTVDPCHDFFSYACGGWIKANVPDGHRSRWGTFSNLWEHNQAIKHLENSTASV SEAERKAQVYYRACMNETRIEELRAKPLMELIERLGGWNITGPWAKDNFQDTLQVV TAHYRTSPFFSVYVSADSKNSNSNVIQVDQSGGLPSRDYYLNKTENEKVLGTGYLNY MVQLGKLLGGGDEEAIRPQMQQILDFETALANITIPQEKRRDEELIYHKVTAELQTL APAINWLPFLNTIFYPVEINESEPIVVYDKEYLEQISTLINTTDRCLLNNYMIWNLVRKT SSFLDQRFQDADEKFMVEMYGTCKTCLPRWKFCVSDTENNLGFALGPMFVKATFA EDSKSIATEIILEIKKAFEESSLTLKWMDEETRKSACEKADAIYNMIGYPNFIMDPKELD </pre>

 Tel: 1-631-559-9269 1-516-512-3133

 Email: info@creative-biomart.com  Fax: 1-631-938-8127

 45-1 Ramsey Road, Shirley, NY 11967, USA

KVFNDYTAVPDLYFENAMRFFNFSWRVTADQLRKAPNRDQWSMTPPMVNAYYSPT
 KNEIVFPAGILQAPFYTRSSPKALNFGGIGVVVGHELTHAFDDQGREYDKDGNLRPW
 WKNSSVEAFKRQTECMVEQYSNYSVNGEPVNGRHTLGENIADNGGLKAAYRAYQN
 WVKKNGAEHSLPTLGLTNNQLFFLGFAQVWCSVRTPESSHEGLITDPHSPSRFRVI
 GSLSNSKEFSEHFRCPPGSPMNPPHKCEVWTRTRPLEQKLISEEDLAANDILDYKD
 DDDKV

Purity > 80% as determined by SDS-PAGE and Coomassie blue staining

Stability Stable for 3 months from receipt of products under proper storage and handling conditions.

Storage Store at -80 centigrade. Avoid repeated freeze-thaw cycles.

Concentration 50 µg/mL as determined by BCA

Storage Buffer 100 mM glycine, 25 mM Tris-HCl, pH 7.3.

GENE INFORMATION

Gene Name [ECE1 endothelin converting enzyme 1 \[Homo sapiens \(human\) \]](#)

Official Symbol [ECE1](#)

Synonyms ECE1; endothelin converting enzyme 1; ECE; endothelin-converting enzyme 1; ECE-1

Gene ID [1889](#)

mRNA Refseq [NM_001113349](#)

 Tel: 1-631-559-9269 1-516-512-3133

 Email: info@creative-biomart.com  Fax: 1-631-938-8127

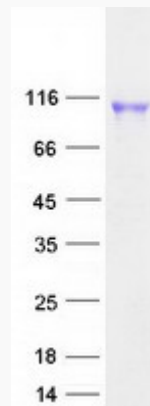
 45-1 Ramsey Road, Shirley, NY 11967, USA

Protein Refseq NP_001106820

MIM 600423

UniProt ID P42892

SDS-PAGE



 Tel: 1-631-559-9269 1-516-512-3133

 Email: info@creative-biomart.com  Fax: 1-631-938-8127

 45-1 Ramsey Road, Shirley, NY 11967, USA