

Recombinant Mouse ECEL1 Protein (1-61 aa), His-Myc-tagged

Cat. No. ECEL1-2464M Lot. No. (See product label)

SPECIFICATION

Product Overview	Recombinant Mouse ECEL1 Protein (1-61 aa) is produced by E. coli expression system. This protein is fused with a 10xHis tag at the N-terminal and a Myc tag at the C-terminal. Research Area: Neuroscience. Protein Description: Partial.
Species	Mouse
Source	E.coli
ProteinLength	1-61 aa
Description	May contribute to the degradation of peptide hormones and be involved in the inactivation of neuronal peptides.
Form	Tris-based buffer,50% glycerol
Molecular Mass	13.7 kDa
AA Sequence	MEAPYSMTAHYDEFQEVKYVSRCGTGGARGTSLPPGFPRGSGRSASGSRSGGLPR WNRREVC
Purity	> 85% as determined by SDS-PAGE.
Notes	Repeated freezing and thawing is not recommended. Store working aliquots at 4 centigrade for up to one week.

 Tel: 1-631-559-9269 1-516-512-3133

 Email: info@creative-biomart.com  Fax: 1-631-938-8127

 45-1 Ramsey Road, Shirley, NY 11967, USA

Storage The shelf life is related to many factors, storage state, buffer ingredients, storage temperature and the stability of the protein itself. Generally, the shelf life of liquid form is 6 months at -20 centigrade/-80 centigrade. The shelf life of lyophilized form is 12 months at -20 centigrade/-80 centigrade.

Concentration A hardcopy of COA will be sent along with the products. Please refer to it for detailed information.

GENE INFORMATION

Gene Name [Ecel1 endothelin converting enzyme-like 1 \[Mus musculus \(house mouse\) \]](#)

Official Symbol [ECEL1](#)

Synonyms Ecel1; xce; DINE;

Gene ID [13599](#)

mRNA Refseq [NM_001277925](#)

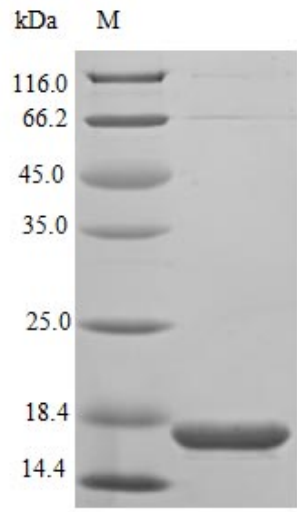
Protein Refseq [NP_001264854](#)

UniProt ID [Q9JMI0](#)

 Tel: 1-631-559-9269 1-516-512-3133

 Email: info@creative-biomart.com  Fax: 1-631-938-8127

 45-1 Ramsey Road, Shirley, NY 11967, USA



(Tris-Glycine gel) Discontinuous SDS-PAGE (reduced) with 5% enrichment gel and 15% separation gel.

 Tel: 1-631-559-9269 1-516-512-3133

 Email: info@creative-biomart.com  Fax: 1-631-938-8127

 45-1 Ramsey Road, Shirley, NY 11967, USA