

## Recombinant Human ECEL1 Protein, GST-tagged

Cat. No. ECEL1-3029H Lot. No. (See product label)

### SPECIFICATION

<b>Product Overview</b>	Human ECEL1 full-length ORF ( AAH50453.2, 1 a.a. - 775 a.a.) recombinant protein with GST-tag at N-terminal.
<b>Species</b>	Human
<b>Source</b>	Wheat Germ
<b>Description</b>	This gene encodes a member of the M13 family of endopeptidases. Members of this family are zinc-containing type II integral-membrane proteins that are important regulators of neuropeptide and peptide hormone activity. Mutations in this gene are associated with autosomal recessive distal arthrogryposis, type 5D. This gene has multiple pseudogenes on chromosome 2. Alternative splicing results in multiple transcript variants encoding different isoforms. [provided by RefSeq, Mar 2014]
<b>Molecular Mass</b>	114.2 kDa
<b>AA Sequence</b>	MEPPYSLTAHYDEFQEVKYVSRGAGGARGASLPPGFPLGAARSATGARSGLPRW NRREVCLLSGLVFAAGLCAILAAMLALKYLGVAAGGGACPEGCPCERKAFARAARFL AANLDASIDPCQDFYSFACGGWLRRAIPDDKLTGTIAAIGEQNEERLRLLARPG GGPGGAAQRKVRAFFRSCLDMREIERLGPRPMLVIEDCGGWDLGGAERPGVAA RWDLNRLLYKAQGVYSAAALFSLTVSLDDRNSSRYVIRIDQDGLTLPERTLYLAQDE DSEKILAAAYRVFMERVLSLLGADAVEQKAQEILQVEQQLANITVSEYDDLRRDVSSM YNKVTLGQLQKITPHLRWKWLLDQIFQEDFSEEEVLLATDYMQQVSQLIRSTPHR VLHNYLVWRVVVVLSEHLSPPFREALHELAQEMEGSDKPKQELARVCLGQANRHFQ

 Tel: 1-631-559-9269 1-516-512-3133

 Email: [info@creative-biomart.com](mailto:info@creative-biomart.com)  Fax: 1-631-938-8127

 45-1 Ramsey Road, Shirley, NY 11967, USA

MALGALFVHEHFSAASKAKVQQLVEDIKYILGQRLEELDWMDAETRAAARAKLQYM  
 MVMVGYPDFLLKPDVAVDKEYEFEVHEKTYFKNILNSIRFSIQLSVKKIRQEVDKSTWL  
 LPPQALNAYYLPNKNQMVFPAGILQPTLYDPDFPQSLNYGGIGTIIGHELTHGYDDW  
 GGQYDRSGNLLHWWTEASYSRFLRKAECIVRLYDNFTVYNQRVNGKHTLGENIAD  
 MGGLKLAYHAYQKWVREHGPEHPLPRLKYTHDQLFFIAFAQNWCIKRRSQSIYLQV  
 LTDKHAPHEHYRVLGVSVSQFEEFGRAFHCPCDSPMNPAPHKCSVW

<b>Applications</b>	Enzyme-linked Immunoabsorbent Assay Western Blot (Recombinant protein) Antibody Production Protein Array
<b>Notes</b>	Best use within three months from the date of receipt of this protein.
<b>Storage</b>	Store at -80 centigrade. Aliquot to avoid repeated freezing and thawing.
<b>Storage Buffer</b>	50 mM Tris-HCl, 10 mM reduced Glutathione, pH=8.0 in the elution buffer.

## GENE INFORMATION

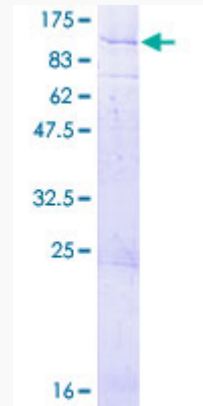
<b>Gene Name</b>	<a href="#">ECEL1 endothelin converting enzyme-like 1 [ Homo sapiens ]</a>
<b>Official Symbol</b>	<a href="#">ECEL1</a>
<b>Synonyms</b>	endothelin converting enzyme-like 1; 3147; Ensembl:ENSG00000171551; endothelin-converting enzyme-like 1;X converting enzyme;damage induced neuronal endopeptidase; XCE; DINE; ECEX
<b>Gene ID</b>	<a href="#">9427</a>
<b>mRNA Refseq</b>	<a href="#">NM_004826</a>

Protein Refseq NP\_004817

MIM 605896

UniProt ID O95672

Quality Control  
Testing



12.5% SDS-PAGE Stained with Coomassie Blue.

Tel: 1-631-559-9269 1-516-512-3133

Email: [info@creative-biomart.com](mailto:info@creative-biomart.com) Fax: 1-631-938-8127

45-1 Ramsey Road, Shirley, NY 11967, USA