

Recombinant Human ECEL1 protein, His-tagged

Cat. No. ECEL1-3421H Lot. No. (See product label)

SPECIFICATION

Product Overview	Recombinant Human ECEL1 protein(425-775 aa), fused with N-terminal His tag, was expressed in E.coli.
Species	Human
Source	E.coli
ProteinLength	425-775 aa
Form	The purified protein was Lyophilized from sterile PBS (58mM Na ₂ HPO ₄ , 17mM NaH ₂ PO ₄ , 68mM NaCl, pH7.4). 5 % trehalose and 5 % mannitol are added as protectant before lyophilization. The elution buffer contain 300mM imidazole.
AASequence	AQEMEGSDKPKELARVCLGQANRHF ^{GMALGALFVHEHFSAASKAKVQQLVEDIKYI LGQRLEELDWMDAETRAAARAKLQYMMVMVGYPDFLLKPAVDKEYEFVHEKTY FKNILNSIRFSIQLSVKKIRQEVDKSTWLLPPQALNAYYLPNKNQMVFAPAGILQPTLYD PDFPQSLNYGGIGTIIGHELTHGYDDWGGQYDRSGNLLHWWTEASYSRFLRKAECI VRLYDNFTVYNQRVNGKHTLGENIADMGGLKLAYHAYQKWVREHGPEHPLPRLKY THDQLFFIAFAQNWCIKRRSQSIYLQVLTDKHAPEHYRVLGSVVSQFEEFGRAFHCPC DSPMNP^{AHKCSVW}}
Purity	85%, by SDS-PAGE with Coomassie Brilliant Blue staining.
Storage	Store at 2-8°C for 1-2 weeks. Aliquot and store at -20°C to -80°C for up to 3 months, reconstitution with sterile water and addition of an equal volume of glycerol. Avoid

 Tel: 1-631-559-9269 1-516-512-3133

 Email: info@creative-biomart.com  Fax: 1-631-938-8127

 45-1 Ramsey Road, Shirley, NY 11967, USA

repeat freeze-thaw cycles.

Reconstitution

Dissolve the product in 200 µl sterile water to achieve a working concentration of 0.25 g/µl. If experimental compatibility allows, mix the aqueous solution with an equal volume of glycerol (1:1 ratio) after initial reconstitution.

GENE INFORMATION

Gene Name [ECEL1 endothelin converting enzyme-like 1 \[Homo sapiens \]](#)

Official Symbol [ECEL1](#)

Synonyms

endothelin converting enzyme-like 1; 3147; Ensembl:ENSG00000171551; endothelin-converting enzyme-like 1;X converting enzyme;damage induced neuronal endopeptidase; XCE; DINE; ECEX

Gene ID [9427](#)

mRNA Refseq [NM_004826.2](#)

Protein Refseq [NP_004817.2](#)

MIM [605896](#)

UniProt ID [O95672](#)

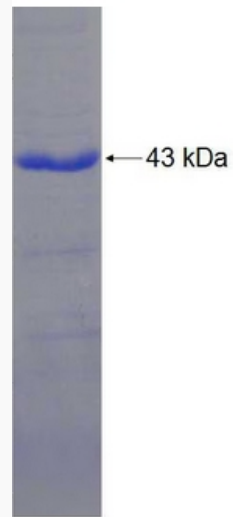
 Tel: 1-631-559-9269 1-516-512-3133

 Email: info@creative-biomart.com  Fax: 1-631-938-8127

 45-1 Ramsey Road, Shirley, NY 11967, USA



SDS-PAGE



Tel: 1-631-559-9269 1-516-512-3133

Email: info@creative-biomart.com Fax: 1-631-938-8127

45-1 Ramsey Road, Shirley, NY 11967, USA