

Recombinant Human ECHDC1 Protein, GST-tagged

Cat. No. ECHDC1-3032H **Lot. No.** (See product label)

SPECIFICATION

Product Overview	Human ECHDC1 full-length ORF (AAH03549.1, 1 a.a. - 301 a.a.) recombinant protein with GST-tag at N-terminal.
Species	Human
Source	Wheat Germ
Description	ECHDC1 (Ethylmalonyl-CoA Decarboxylase 1) is a Protein Coding gene. Among its related pathways are Fatty Acid Biosynthesis (WikiPathways) and Propanoate metabolism. GO annotations related to this gene include carboxy-lyase activity and methylmalonyl-CoA decarboxylase activity.
Molecular Mass	59.4 kDa
AA Sequence	MAKSLKKTASLSGRTKLLHQTGLSLYSTSHGFYEEEVKKTLLQQFPGGSIDLQKEDNG IGILTLNPNPSRMNAFSGVMMLQLLEKVIELLENWTEGKGLIVRGAKNTFSSGSDLNAVK SLGTPEDGMAVCMFMQNTLTRFMRLPLISVALVQGWALGGGAFTTACDFRLMTP ESKIRFVHKEMGIIPSWGTTTRLVEIIGSRQALKVLSGALKLDSKNALNIGMVEEVLQS SDETKSLEEAQEWLKQFIQGPPEVIRALKKSVCSGRELYLEEALQNERDLLGTVWG GPANLEAIAKKGKFNK
Applications	Enzyme-linked Immunoabsorbent Assay Western Blot (Recombinant protein) Antibody Production Protein Array

 Tel: 1-631-559-9269 1-516-512-3133

 Email: info@creative-biomart.com  Fax: 1-631-938-8127

 45-1 Ramsey Road, Shirley, NY 11967, USA

Notes	Best use within three months from the date of receipt of this protein.
Storage	Store at -80 centigrade. Aliquot to avoid repeated freezing and thawing.
Storage Buffer	50 mM Tris-HCl, 10 mM reduced Glutathione, pH=8.0 in the elution buffer.

GENE INFORMATION

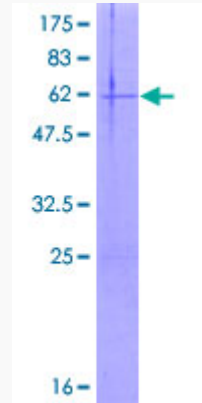
Gene Name	ECHDC1 enoyl CoA hydratase domain containing 1 [Homo sapiens]
Official Symbol	ECHDC1
Synonyms	ECHDC1; enoyl CoA hydratase domain containing 1; enoyl Coenzyme A hydratase domain containing 1; ethylmalonyl-CoA decarboxylase; dJ351K20.2; methylmalonyl-CoA decarboxylase; enoyl-CoA hydratase domain-containing protein 1; MMCD; FLJ40827; DKFZp762M1110;
Gene ID	55862
mRNA Refseq	NM_001002030
Protein Refseq	NP_001002030
MIM	612136
UniProt ID	Q9NTX5

 Tel: 1-631-559-9269 1-516-512-3133

 Email: info@creative-biomart.com  Fax: 1-631-938-8127

 45-1 Ramsey Road, Shirley, NY 11967, USA

**Quality Control
Testing**



12.5% SDS-PAGE Stained with Coomassie Blue.

 Tel: 1-631-559-9269 1-516-512-3133

 Email: info@creative-biomart.com  Fax: 1-631-938-8127

 45-1 Ramsey Road, Shirley, NY 11967, USA