

Recombinant Full Length Human ECHS1 Protein, C-Flag-tagged

Cat. No. ECHS1-1352HFL **Lot. No.** (See product label)

SPECIFICATION

Product Overview	Recombinant Full Length Human ECHS1 Protein, fused to Flag-tag at C-terminus, was expressed in Mammalian cells.
Species	Human
Source	Mammalian Cells
Description	The protein encoded by this gene functions in the second step of the mitochondrial fatty acid beta-oxidation pathway. It catalyzes the hydration of 2-trans-enoyl-coenzyme A (CoA) intermediates to L-3-hydroxyacyl-CoAs. The gene product is a member of the hydratase/isomerase superfamily. It localizes to the mitochondrial matrix. Transcript variants utilizing alternative transcription initiation sites have been described in the literature.
Form	25 mM Tris HCl, pH 7.3, 100 mM glycine, 10% glycerol.
Molecular Mass	31.2 kDa
AA Sequence	MAALRVLLSCVRGPLRPPVRCPAWRPFASGANFEYIIAEKRGKNNNTVGLIQLNRPKA LNALCDGLIDELN QALKIFEEDPAVGAIVLTGGDKAFAAGADIKEMQNLSFQDCYSS KFLKHWDHILTQVKKPVIAAVNGYAFG GGCELAMMCDIYAGEKAQFAQPEILIGTIPG AGGTQRLTRAVGKSLAMEMVLTGDRISAQDAKQAGLVS KICPVETLVVEEAIQCAEKI ASNSKIVVAMAKESVNAAFEMTLTEGSKLEKLFYSTFATDDRKEGMTAFV EKRRANFKDQTRTRPLEQKLISEEDLAANDILDYKDDDDKV

 Tel: 1-631-559-9269 1-516-512-3133

 Email: info@creative-biomart.com  Fax: 1-631-938-8127

 45-1 Ramsey Road, Shirley, NY 11967, USA

Purity	> 80% as determined by SDS-PAGE and Coomassie blue staining.
Stability	Stable for 12 months from the date of receipt of the product under proper storage and handling conditions. Avoid repeated freeze-thaw cycles.
Storage	Store at -80 centigrade.
Concentration	>50 ug/mL as determined by microplate BCA method.
Preparation	Recombinant protein was captured through anti-DDK affinity column followed by conventional chromatography steps.
Protein Pathways	beta-Alanine metabolism, Butanoate metabolism, Fatty acid elongation in mitochondria, Fatty acid metabolism, Limonene and pinene degradation, Lysine degradation, Metabolic pathways, Propanoate metabolism, Tryptophan metabolism, Valine, leucine and isoleucine degradation
Full Length	Full L.

GENE INFORMATION

Gene Name	ECHS1 enoyl-CoA hydratase, short chain 1 [Homo sapiens (human)]
Official Symbol	ECHS1
Synonyms	SCEH; mECH; mECH1; ECHS1D
Gene ID	1892
mRNA Refseq	NM_004092.4

 Tel: 1-631-559-9269 1-516-512-3133

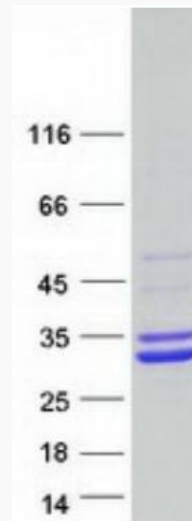
 Email: info@creative-biomart.com  Fax: 1-631-938-8127

 45-1 Ramsey Road, Shirley, NY 11967, USA

Protein Refseq NP_004083.3

MIM 602292

UniProt ID P30084



Coomassie blue staining of purified ECHS1 protein.

 Tel: 1-631-559-9269 1-516-512-3133

 Email: info@creative-biomart.com  Fax: 1-631-938-8127

 45-1 Ramsey Road, Shirley, NY 11967, USA