

Recombinant Human ECHS1 Protein, GST-tagged

Cat. No. ECHS1-3034H Lot. No. (See product label)

SPECIFICATION

Product Overview	Human ECHS1 full-length ORF (AAH08906, 13 a.a. - 290 a.a.) recombinant protein with GST-tag at N-terminal.
Species	Human
Source	Wheat Germ
Description	The protein encoded by this gene functions in the second step of the mitochondrial fatty acid beta-oxidation pathway. It catalyzes the hydration of 2-trans-enoyl-coenzyme A (CoA) intermediates to L-3-hydroxyacyl-CoAs. The gene product is a member of the hydratase/isomerase superfamily. It localizes to the mitochondrial matrix. Transcript variants utilizing alternative transcription initiation sites have been described in the literature. [provided by RefSeq, Jul 2008]
Molecular Mass	56.32 kDa
AA Sequence	GPLRPPVRCPAWRPFASGANFEYIIAEKRGKNNTVGLIQLNRPKALNALCDGLIDELN QALKIFEEDPAVGAIIVLTGGDKAFAAGADIKEMQNLSFQDCYSSKFLKHWDHLTQVK KPVIAAVNGYAFGGGCELAMMCDIIYAGEKAQFAQPEILIGTIPGAGGTQRLTRAVGK SLAMEMVLTGDRISAQDAKQAGLVSKICPVETLVEEAIQCAEKIASNSKIVVAMAKES VNAAFEMTLTEGSKLEKLFYSTFATDDRKEGMTAFVEKRKANFKDQ
Applications	Enzyme-linked Immunoabsorbent Assay Western Blot (Recombinant protein) Antibody Production

 Tel: 1-631-559-9269 1-516-512-3133

 Email: info@creative-biomart.com  Fax: 1-631-938-8127

 45-1 Ramsey Road, Shirley, NY 11967, USA

Protein Array

Notes	Best use within three months from the date of receipt of this protein.
Storage	Store at -80 centigrade. Aliquot to avoid repeated freezing and thawing.
Storage Buffer	50 mM Tris-HCl, 10 mM reduced Glutathione, pH=8.0 in the elution buffer.

GENE INFORMATION

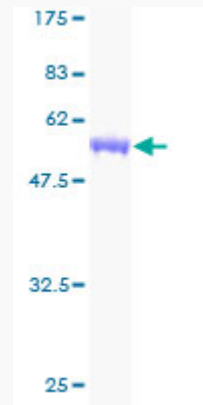
Gene Name	ECHS1 enoyl CoA hydratase, short chain, 1, mitochondrial [Homo sapiens]
Official Symbol	ECHS1
Synonyms	ECHS1; enoyl CoA hydratase, short chain, 1, mitochondrial; enoyl Coenzyme A hydratase, short chain, 1, mitochondrial; enoyl-CoA hydratase, mitochondrial; SCEH; enoyl-CoA hydratase 1; short-chain enoyl-CoA hydratase;
Gene ID	1892
mRNA Refseq	NM_004092
Protein Refseq	NP_004083
MIM	602292
UniProt ID	P30084

 Tel: 1-631-559-9269 1-516-512-3133

 Email: info@creative-biomart.com  Fax: 1-631-938-8127

 45-1 Ramsey Road, Shirley, NY 11967, USA

**Quality Control
Testing**



12.5% SDS-PAGE Stained with Coomassie Blue.

 Tel: 1-631-559-9269 1-516-512-3133

 Email: info@creative-biomart.com  Fax: 1-631-938-8127

 45-1 Ramsey Road, Shirley, NY 11967, USA