

Recombinant Full Length Human ECM1 Protein, C-Flag-tagged

Cat. No. ECM1-1621HFL Lot. No. (See product label)

SPECIFICATION

Product Overview	Recombinant Full Length Human ECM1 Protein, fused to Flag-tag at C-terminus, was expressed in Mammalian cells.
Species	Human
Source	Mammalian Cells
Description	This gene encodes a soluble protein that is involved in endochondral bone formation, angiogenesis, and tumor biology. It also interacts with a variety of extracellular and structural proteins, contributing to the maintenance of skin integrity and homeostasis. Mutations in this gene are associated with lipoid proteinosis disorder (also known as hyalinosis cutis et mucosae or Urbach-Wiethe disease) that is characterized by generalized thickening of skin, mucosae and certain viscera. Alternatively spliced transcript variants encoding distinct isoforms have been described for this gene.
Form	25 mM Tris HCl, pH 7.3, 100 mM glycine, 10% glycerol.
Molecular Mass	58.8 kDa
AA Sequence	<p>MGTTARAALVLTYLAVASAASEGGFTATGQRQLRPEHFQEVGYAAPPSPPLSRSLP MDHPDSSQHGPPFE GQSQVQPPPSQEATPLQQEKLLPAQLPAEKEVGPPLPQEA VPLQKELPSLQHPNEQKEGMPAPFGDQSHPEPESWNAAQHCQQDRSQGGWGHRL DGFPPGRSPDNLNQICLPNRQHVVYGPWNLPQSSYSHLTRQGETLNFLEIGYSR CCHCRSHTNRLECAKLVWEEAMSRFCEAEFSVKTRPHWCCTRQGEARFSCFQEE APQPHYQLRACPSHQPDISSGLELPPFPGVPTLDNIKNICHLRRFRSVPRNLPATDP</p>

 Tel: 1-631-559-9269 1-516-512-3133

 Email: info@creative-biomart.com  Fax: 1-631-938-8127

 45-1 Ramsey Road, Shirley, NY 11967, USA

LQRELLALIQLEREFQRCCR QGNNHTCTWKAWEDTLDKYCDREYAVKTHHHLCCR
 HPPSPTRDECFARRAPYPNYDRDILTIDISRVTPN LMGHLCGNQRVLTKHKHIPGLIH
 NMTARCCDLPFPEQACCAEEELTFINDLCGPRRNIWRDPALCCYLS
 PGDEQVNCFNINYLRNVALVSGDTENAKGQGEQGSGTGGTNISSSTSEPKETRTRPL
 EQKLISEEDLAANDILDYKDDDDKV

Purity > 80% as determined by SDS-PAGE and Coomassie blue staining.

Stability Stable for 12 months from the date of receipt of the product under proper storage and handling conditions. Avoid repeated freeze-thaw cycles.

Storage Store at -80 centigrade.

Concentration >50 ug/mL as determined by microplate BCA method.

Preparation Recombinant protein was captured through anti-DDK affinity column followed by conventional chromatography steps.

Protein Families Secreted Protein, Transmembrane

Full Length Full L.


GENE INFORMATION

Gene Name [ECM1 extracellular matrix protein 1 \[Homo sapiens \(human\) \]](#)

Official Symbol [ECM1](#)

Synonyms URBWD

Gene ID [1893](#)

 Tel: 1-631-559-9269 1-516-512-3133

 Email: info@creative-biomart.com  Fax: 1-631-938-8127

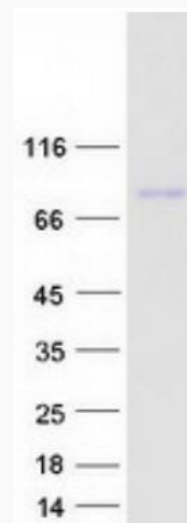
 45-1 Ramsey Road, Shirley, NY 11967, USA

mRNA Refseq [NM_004425.4](#)

Protein Refseq [NP_004416.2](#)

MIM [602201](#)

UniProt ID [Q16610](#)



Coomassie blue staining of purified ECM1 protein.

 Tel: 1-631-559-9269 1-516-512-3133

 Email: info@creative-biomart.com  Fax: 1-631-938-8127

 45-1 Ramsey Road, Shirley, NY 11967, USA