

Recombinant Human ECM1 Protein, Myc/DDK-tagged, C13 and N15-labeled

Cat. No. ECM1-2351H **Lot. No.** (See product label)

SPECIFICATION

Product Overview	ECM1 MS Standard C13 and N15-labeled recombinant protein (NP_004416) with a C-terminal MYC/DDK tag, was expressed in HEK293 cells.
Species	Human
Source	HEK293
Description	This gene encodes a soluble protein that is involved in endochondral bone formation, angiogenesis, and tumor biology. It also interacts with a variety of extracellular and structural proteins, contributing to the maintenance of skin integrity and homeostasis. Mutations in this gene are associated with lipoid proteinosis disorder (also known as hyalinosis cutis et mucosae or Urbach-Wiethe disease) that is characterized by generalized thickening of skin, mucosae and certain viscera. Alternatively spliced transcript variants encoding distinct isoforms have been described for this gene.
Molecular Mass	60.7 kDa
AA Sequence	MGTTARAALVLTYLAVASAASEGGFTATGQRQLRPEHFQEVGYAAPPSPPLSRSLP MDHPDSSQHGPFFEGQSQVQPPPSQEATPLQQEKLLPAQLPAEKEVGPPLPQEAV PLQKELPSLQHPNEQKEGMPAPFGDQSHPEPESWNAAQHCQQDRSQGGWGHRL DGFPPGRPSPDNLNQICLPNRQHVVYGPWNLPQSSYSHLTRQGETLNFLEIGYSRC CHCRSHTNRLECAKLVWEEAMSRFCEAEFSVKTRPHWCCTRQGEARFSCFQEEA PQPHYQLRACPSHQPDISSGLELPFPPGVPTLDNIKNICHLRRFRSVPRNLPATDPL

 Tel: 1-631-559-9269 1-516-512-3133

 Email: info@creative-biomart.com  Fax: 1-631-938-8127

 45-1 Ramsey Road, Shirley, NY 11967, USA



QRELLALIQLEREFQRCCRQGNHTCTWKAWEDTLDKYCDREYAVKTHHHLCCRH
PPSPTRDECFAARRAPYPNYDRDILTIDISRVTPNLMGHLCGNQRVLTKHKHIPGLIHN
MTARCCDLPFPEQACCAEEEEKLTFFINDLCGPRRNIIWRDPALCCYLSPGDEQVNCFNI
NYLRNVALVSGDTENAKGQGEQGSGTGGTNNISSTSEPKEETRTRPLEQKLISEEDLAA
NDILDYKDDDDKV

Purity > 80% as determined by SDS-PAGE and Coomassie blue staining

Stability Stable for 3 months from receipt of products under proper storage and handling conditions.

Storage Store at -80 centigrade. Avoid repeated freeze-thaw cycles.

Concentration 50 µg/mL as determined by BCA

Storage Buffer 100 mM glycine, 25 mM Tris-HCl, pH 7.3.

GENE INFORMATION

Gene Name ECM1 extracellular matrix protein 1 [Homo sapiens (human)]

Official Symbol ECM1

Synonyms ECM1; extracellular matrix protein 1; secretory component p85;

Gene ID 1893

mRNA Refseq NM_004425

Protein Refseq NP_004416

Tel: 1-631-559-9269 1-516-512-3133

Email: info@creative-biomart.com Fax: 1-631-938-8127

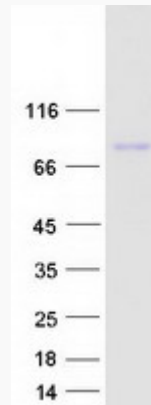
45-1 Ramsey Road, Shirley, NY 11967, USA



MIM 602201

UniProt ID Q16610

SDS-PAGE



Tel: 1-631-559-9269 1-516-512-3133

Email: info@creative-biomart.com Fax: 1-631-938-8127

45-1 Ramsey Road, Shirley, NY 11967, USA