

Recombinant Human EDA Protein, Myc/DDK-tagged, C13 and N15-labeled

Cat. No. EDA-4269H **Lot. No.** (See product label)

SPECIFICATION

Product Overview	EDA MS Standard C13 and N15-labeled recombinant protein (NP_001005610) with a C-terminal MYC/DDK tag, was expressed in HEK293 cells.
Species	Human
Source	HEK293
Description	The protein encoded by this gene is a type II membrane protein that can be cleaved by furin to produce a secreted form. The encoded protein, which belongs to the tumor necrosis factor family, acts as a homotrimer and may be involved in cell-cell signaling during the development of ectodermal organs. Defects in this gene are a cause of ectodermal dysplasia, anhidrotic, which is also known as X-linked hypohidrotic ectodermal dysplasia. Several transcript variants encoding many different isoforms have been found for this gene.
Molecular Mass	19 kDa
AA Sequence	MGYPEVERRELLPAAAPRERGSQGC GCGGAPARAGEGNSCLLFLGFFGLSLALHLL TLCCYLELRSELRRERGAESRLGGSGTPGTSGTLSSLGGLDPDSPITSHLGQPSPK QQPLEPGEAALHSDSQDGHQMALLNFFFPDEKPYSEEE SRRVRRNKRSKSNEGAD GKSTQLILYHFTRTRPLEQKLISEEDLAANDILDYKDDDDKV
Purity	> 80% as determined by SDS-PAGE and Coomassie blue staining

 Tel: 1-631-559-9269 1-516-512-3133

 Email: info@creative-biomart.com  Fax: 1-631-938-8127

 45-1 Ramsey Road, Shirley, NY 11967, USA

Stability	Stable for 3 months from receipt of products under proper storage and handling conditions.
Storage	Store at -80 centigrade. Avoid repeated freeze-thaw cycles.
Concentration	50 µg/mL as determined by BCA
Storage Buffer	100 mM glycine, 25 mM Tris-HCl, pH 7.3.

GENE INFORMATION

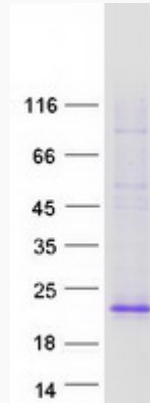
Gene Name	EDA ectodysplasin A [Homo sapiens (human)]
Official Symbol	EDA
Synonyms	EDA; ectodysplasin A; ectodermal dysplasia 1, anhidrotic, ED1, EDA2, ODT1, oligodontia 1; ectodysplasin-A; ED1 A1; ED1 A2; EDA1; HED; XHED; XLHED; oligodontia 1; ectodermal dysplasia protein; X-linked anhidrotic ectodermal dysplasia protein; ED1; EDA2; ODT1; ED1-A1; ED1-A2; STHAGX1;
Gene ID	1896
mRNA Refseq	NM_001005610
Protein Refseq	NP_001005610
MIM	300451
UniProt ID	Q92838

 Tel: 1-631-559-9269 1-516-512-3133

 Email: info@creative-biomart.com  Fax: 1-631-938-8127

 45-1 Ramsey Road, Shirley, NY 11967, USA

SDS-PAGE



 Tel: 1-631-559-9269 1-516-512-3133

 Email: info@creative-biomart.com  Fax: 1-631-938-8127

 45-1 Ramsey Road, Shirley, NY 11967, USA