

## Recombinant Human EDA2R Protein, GST-tagged

Cat. No. EDA2R-3045H Lot. No. (See product label)

### SPECIFICATION

<b>Product Overview</b>	Human EDA2R full-length ORF ( NP_068555.1, 1 a.a. - 297 a.a.) recombinant protein with GST-tag at N-terminal.
<b>Species</b>	Human
<b>Source</b>	Wheat Germ
<b>Description</b>	The protein encoded by this gene is a type III transmembrane protein of the TNFR (tumor necrosis factor receptor) superfamily, and contains cysteine-rich repeats and a single transmembrane domain. This protein binds to the EDA-A2 isoform of ectodysplasin, which plays an important role in maintenance of hair and teeth. Alternatively spliced transcript variants encodes distinct protein isoforms. [provided by RefSeq, Apr 2016]
<b>Molecular Mass</b>	59.1 kDa
<b>AA Sequence</b>	MDCQENEYWDQWGRCVTCQRCGPGQELSKDCGYGEGGDAYCTACPPRRYKSS WGHHCRCQCITCAVINRVQKVNCTATSNVCGDCLPRFYRKTRIGGLQDQECIPCT KQTPTSEVQCAFQLSLVEADAPTVPPEATLVALVSSLLVFTLAFGLFFLYCKQFF NRHCQRGGLLQFEADKTAKEESLFPVPPSKETS AESQVSENI FQTQPLNPILEDDCS STSGFPTQESFTMASCTSESHSHVHSPICE TELDLQKFSSSASYTGAETLGGNTV ESTGDRLELNVPFEVPSP
<b>Applications</b>	Enzyme-linked Immunoabsorbent Assay Western Blot (Recombinant protein)

 Tel: 1-631-559-9269 1-516-512-3133

 Email: [info@creative-biomart.com](mailto:info@creative-biomart.com)  Fax: 1-631-938-8127

 45-1 Ramsey Road, Shirley, NY 11967, USA

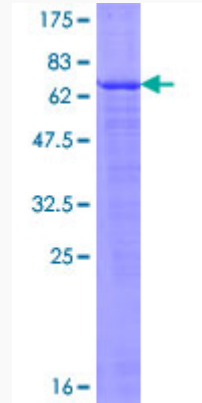
	Antibody Production Protein Array
<b>Notes</b>	Best use within three months from the date of receipt of this protein.
<b>Storage</b>	Store at -80 centigrade. Aliquot to avoid repeated freezing and thawing.
<b>Storage Buffer</b>	50 mM Tris-HCl, 10 mM reduced Glutathione, pH=8.0 in the elution buffer.
<b>GENE INFORMATION</b>	
<b>Gene Name</b>	EDA2R ectodysplasin A2 receptor [ Homo sapiens ]
<b>Official Symbol</b>	EDA2R
<b>Synonyms</b>	EDA2R; ectodysplasin A2 receptor; tumor necrosis factor receptor superfamily member 27; EDA A2R; EDAA2R; TNFRSF27; XEDAR; EDA-A2 receptor; X-linked ectodysplasin-A2 receptor; tumor necrosis factor receptor superfamily member XEDAR; EDA-A2R;
<b>Gene ID</b>	60401
<b>mRNA Refseq</b>	NM_001199687
<b>Protein Refseq</b>	NP_001186616
<b>MIM</b>	300276
<b>UniProt ID</b>	Q9HAV5

 Tel: 1-631-559-9269 1-516-512-3133

 Email: [info@creative-biomart.com](mailto:info@creative-biomart.com)  Fax: 1-631-938-8127

 45-1 Ramsey Road, Shirley, NY 11967, USA

**Quality Control  
Testing**



12.5% SDS-PAGE Stained with Coomassie Blue.

 Tel: 1-631-559-9269 1-516-512-3133

 Email: [info@creative-biomart.com](mailto:info@creative-biomart.com)  Fax: 1-631-938-8127

 45-1 Ramsey Road, Shirley, NY 11967, USA