

## Recombinant Human EDIL3 Protein, His-tagged

Cat. No. EDIL3-001H Lot. No. (See product label)

### SPECIFICATION

<b>Product Overview</b>	Recombinant Human EDIL3 Protein (17-471 (without peptide signal)) with 6xHis tag was expressed in E. coli.
<b>Species</b>	Human
<b>Source</b>	E.coli
<b>ProteinLength</b>	17-471
<b>Description</b>	The protein encoded by this gene is an integrin ligand. It plays an important role in mediating angiogenesis and may be important in vessel wall remodeling and development. It also influences endothelial cell behavior.
<b>Molecular Mass</b>	51.8 kDa
<b>Purity</b>	>80% confirmed by 10% SDS-PAGE stained with Coomassie Blue (CB), immunoblotting with anti-6xHis monoclonal (WB).
<b>Applications</b>	ELISA, Western Blot, Antibody Production, Protein array
<b>Quality Control Test</b>	10% SDS-PAGE stained with Coomassie Blue (CB), immunoblotting with anti-6xHis monoclonal and peptide fingerprinting by MALDI-TOF mass spectrometry.
<b>Storage</b>	Store working aliquots at 4 centigrade for up to one week. For extended storage, conserve at -80 centigrade.

 Tel: 1-631-559-9269 1-516-512-3133

 Email: [info@creative-biomart.com](mailto:info@creative-biomart.com)  Fax: 1-631-938-8127

 45-1 Ramsey Road, Shirley, NY 11967, USA

<b>Expiry</b>	12 months from the date of purchase, if it is properly stored.
<b>Storage Buffer</b>	TrisHCl 50mM pH 8.0 + 50mM NaCl + 5% glicerol + 0.1% Triton X-100.
<b>Shipping</b>	Dry Ice

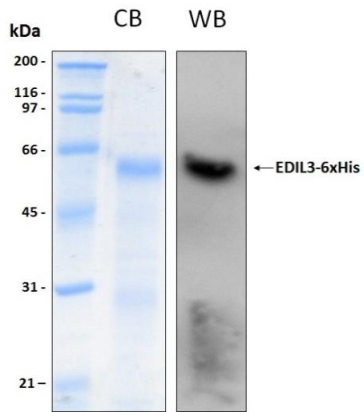
## GENE INFORMATION

<b>Gene Name</b>	EDIL3 EGF like repeats and discoidin domains 3 [ Homo sapiens (human) ]
<b>Official Symbol</b>	EDIL3
<b>Synonyms</b>	EDIL3; EGF like repeats and discoidin domains 3; DEL1; EGF-like repeat and discoidin I-like domain-containing protein 3; EGF-like repeats and discoidin I-like domains 3; developmental endothelial locus-1; developmentally-regulated endothelial cell locus 1 protein; integrin-binding protein DEL1
<b>Gene ID</b>	10085
<b>mRNA Refseq</b>	NM_001278642
<b>Protein Refseq</b>	NP_001265571
<b>MIM</b>	606018
<b>UniProt ID</b>	O43854

 Tel: 1-631-559-9269 1-516-512-3133

 Email: [info@creative-biomart.com](mailto:info@creative-biomart.com)  Fax: 1-631-938-8127

 45-1 Ramsey Road, Shirley, NY 11967, USA



 Tel: 1-631-559-9269 1-516-512-3133

 Email: [info@creative-biomart.com](mailto:info@creative-biomart.com)  Fax: 1-631-938-8127

 45-1 Ramsey Road, Shirley, NY 11967, USA