

## Recombinant Human EDIL3 protein(24-480aa), His-tagged

Cat. No. EDIL3-3827H Lot. No. (See product label)

### SPECIFICATION

<b>Product Overview</b>	Recombinant Human EDIL3 protein(O43854)(24-480aa), fused with C-terminal His tag, was expressed in Insect Cells.
<b>Species</b>	Human
<b>Source</b>	Insect Cells
<b>ProteinLength</b>	24-480aa
<b>Form</b>	If the delivery form is liquid, the default storage buffer is Tris/PBS-based buffer, 5%-50% glycerol. If the delivery form is lyophilized powder, the buffer before lyophilization is Tris/PBS-based buffer, 6% Trehalose, pH 8.0.
<b>Molecular Mass</b>	57.0 kDa
<b>Purity</b>	Greater than 85% as determined by SDS-PAGE.
<b>Storage</b>	Store at -20°C/-80°C upon receipt, aliquoting is necessary for mutiple use. Avoid repeated freeze-thaw cycles.
<b>Reconstitution</b>	We recommend that this vial be briefly centrifuged prior to opening to bring the contents to the bottom. Please reconstitute protein in deionized sterile water to a concentration of 0.1-1.0 mg/mL. We recommend to add 5-50% of glycerol (final concentration) and aliquot for long-term storage at -20°C/-80°C.

 Tel: 1-631-559-9269 1-516-512-3133

 Email: [info@creative-biomart.com](mailto:info@creative-biomart.com)  Fax: 1-631-938-8127

 45-1 Ramsey Road, Shirley, NY 11967, USA

**AA Sequence**

DICDPNPCENGGICLPGLADGSFSCECPDGFDPNCSSVVEVASDEEEPTSAGPCT  
 PNPCHNGGTCEISEAYRGDTFIGYVCKCPRGFNGIHCQHINECEVEPCKNGGICTD  
 LVANYSCECPGEFMGRNCQYKCSGPLGIEGGIISNQQITASSTHRALFGLQKWYPYY  
 ARLNKKGLINAWTAAENDRWPWIQINLQRKMRVTGVITQGAKRIGSPEYIKSYKIAYS  
 NDGKTWAMYKVKGTNEDMVFRGNIDNNTPYANSFTPPIKAQYVRLYPQVCRRHCTL  
 RMELLGCELSGCSEPLGMKSGHIQDYQITASSIFRTLNDMDFMFTWEPRKARLDKQKG  
 VNAWTSGHNDQSQWLQVDLLVPTKVTGIITQGAKDFGHVQFVGSYKLAYSNDGEH  
 WTVYQDEKQRKDKVFQGNFDNDTHRKNVIDPPIYARHIRILPWSWYGRITLRSELLG  
 CTEEE

## GENE INFORMATION

**Gene Name** [EDIL3 EGF-like repeats and discoidin I-like domains 3 \[ Homo sapiens \]](#)

**Official Symbol** [EDIL3](#)

**Synonyms** EDIL3; EGF-like repeats and discoidin I-like domains 3; EGF-like repeat and discoidin I-like domain-containing protein 3; DEL1; integrin-binding protein DEL1; developmental endothelial locus-1; developmentally-regulated endothelial cell locus 1 protein; MGC26287;

**Gene ID** [10085](#)

**mRNA Refseq** [NM\\_005711](#)

**Protein Refseq** [NP\\_005702](#)

**MIM** [606018](#)

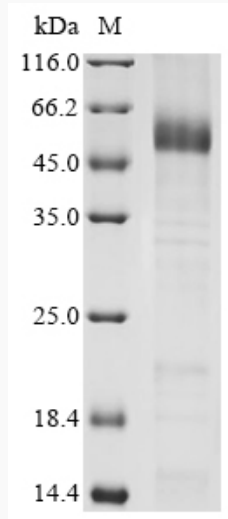
**UniProt ID** [O43854](#)

 Tel: 1-631-559-9269 1-516-512-3133

 Email: [info@creative-biomart.com](mailto:info@creative-biomart.com)  Fax: 1-631-938-8127

 45-1 Ramsey Road, Shirley, NY 11967, USA

**SDS-PAGE**



 Tel: 1-631-559-9269 1-516-512-3133

 Email: [info@creative-biomart.com](mailto:info@creative-biomart.com)  Fax: 1-631-938-8127

 45-1 Ramsey Road, Shirley, NY 11967, USA