

Recombinant Human EEA1 protein, His-tagged

Cat. No. EEA1-3902H **Lot. No.** (See product label)

SPECIFICATION

Product Overview	Recombinant Human EEA1(His1232~Lys1348) fused with His tag at N-terminal was expressed in E. coli.
Species	Human
Source	E.coli
ProteinLength	His1232~Lys1348
Description	EEA1 played an important role in many functions.
Form	PBS, pH7.4, containing 0.01% SKL, 1mM DTT, 5% Trehalose and Proclin300
Molecular Mass	17.0kDa
Endotoxin	<1.0EU per 1g (determined by the LAL method)
Purity	> 95%
Applications	Positive Control; Immunogen; SDS-PAGE; WB. If bio-activity of the protein is needed, please check active protein
Stability	The thermal stability is described by the loss rate. The loss rate was determined by accelerated thermal degradation test, that is, incubate the protein at 37 centigrade for 48h, and no obvious degradation and precipitation were observed. The loss rate is

 Tel: 1-631-559-9269 1-516-512-3133

 Email: info@creative-biomart.com  Fax: 1-631-938-8127

 45-1 Ramsey Road, Shirley, NY 11967, USA

less than 5% within the expiration date under appropriate storage condition.

Storage

Avoid repeated freeze/thaw cycles. Store at 2-8 centigrade for one month. Aliquot and store at -80 centigrade for 12 months.

Reconstitution

Reconstitute in PBS or others

GENE INFORMATION

Gene Name

EEA1 early endosome antigen 1 [Homo sapiens]

Official Symbol

EEA1

Synonyms

EEA1; early endosome antigen 1; early endosome antigen 1, 162kD; ZFYVE2; endosome-associated protein p162; early endosome-associated protein; zinc finger FYVE domain-containing protein 2; MST105; MSTP105;

Gene ID

8411

mRNA Refseq

NM_003566

Protein Refseq

NP_003557

MIM

605070

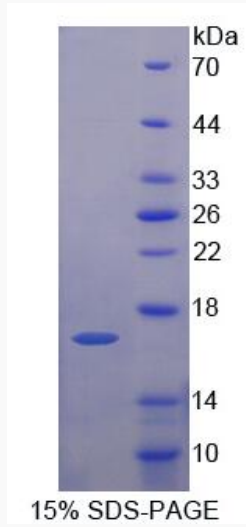
UniProt ID

Q15075

 Tel: 1-631-559-9269 1-516-512-3133

 Email: info@creative-biomart.com  Fax: 1-631-938-8127

 45-1 Ramsey Road, Shirley, NY 11967, USA



Tel: 1-631-559-9269 1-516-512-3133

Email: info@creative-biomart.com Fax: 1-631-938-8127

45-1 Ramsey Road, Shirley, NY 11967, USA