

Recombinant Full Length Human EEF1A1 Protein

Cat. No. EEF1A1-10HFL Lot. No. (See product label)

SPECIFICATION

Product Overview	Recombinant human EEF1A1 protein is expressed in E. coli.
Species	Human
Source	E.coli
ProteinLength	1-462 aa
Description	This gene encodes an isoform of the alpha subunit of the elongation factor-1 complex, which is responsible for the enzymatic delivery of aminoacyl tRNAs to the ribosome. This isoform (alpha 1) is expressed in brain, placenta, lung, liver, kidney, and pancreas, and the other isoform (alpha 2) is expressed in brain, heart and skeletal muscle. This isoform is identified as an autoantigen in 66% of patients with Felty syndrome. This gene has been found to have multiple copies on many chromosomes, some of which, if not all, represent different pseudogenes.
Form	Liquid
AASequence	MGKEKTHINIVVIGHVDSGKSTTTGHLIYKCGGIDKRTIEKFEKEAAEMGKGSFKYAW VLDKKAERERGITIDISLWKFETSKYYVTIIDAPGHRDFIKNMITGTSQADCAVLIVAA GVGEFEAGISKNGQTRHALLAYTLGVKQLIVGVNKMDSTEPYPYSQKRYEEIVKEVS TYIKKIGYNPDTVAFVPISGWNGDNMLEPSANMPWFKGWKPTRKDGNASGTTLLEA LDCILPPTRPDKPLRLPLQDVYKIGGIGTVPVGRVETGVLKPGMVVTFAPVNVTTTEV KSVEMHHEALSEALPGDNVGFNVKNVSVKDVRRGNVAGDSKNDPPMEAAGFTAQV IILNHPGQISAGYAPVLDCHTAHIACKFAELKEKIDRRSGKKLEDGPKFLKSGDAAIVD

 Tel: 1-631-559-9269 1-516-512-3133

 Email: info@creative-biomart.com  Fax: 1-631-938-8127

 45-1 Ramsey Road, Shirley, NY 11967, USA

	MVPGKPMCVESFSDYPPLGRFAVRDMRQTVAVGVKAVDKKAAGAGKITKSAQKAQ KAK
Molecular Mass	50.1 kDa
Purity	> 90% by SDS-PAGE
Application	SDS-PAGE, Denatured
Note	For research use only. This product is not intended or approved for human, diagnostics or veterinary use.
Storage	Can be stored at +2 to +8 centigrade for 1 week. For long term storage, aliquot and store at -20 to -80 centigrade. Avoid repeated freezing and thawing cycles.
Storage Buffer	20mM Tris-HCl buffer (pH 8.0) containing 0.4M urea, 10% glycerol
Concentration	1 mg/mL (determined by Bradford assay)

GENE INFORMATION

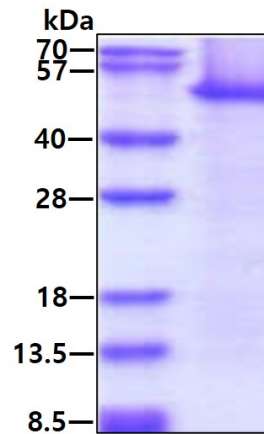
Gene ID	1915
Gene Name	EEF1A1 eukaryotic translation elongation factor 1 alpha 1 [Homo sapiens (human)]
Official Symbol	1915
Synonyms	CCS3; EF1A; PTI1; CCS-3; EE1A1; EEF-1; EEF1A; EF-Tu; LENG7; eEF1A-1; GRAF-1EF; HNGC:16303
mRNA Refseq	NM_001402.5

 Tel: 1-631-559-9269 1-516-512-3133

 Email: info@creative-biomart.com  Fax: 1-631-938-8127

 45-1 Ramsey Road, Shirley, NY 11967, USA

Official Symbol 2	EEF1A1
Gene ID 2	1915
Gene Name 2	EEF1A1 eukaryotic translation elongation factor 1 alpha 1 [Homo sapiens (human)]
mRNA Refseq 2	NM_001402.5
Protein Refseq 2	NP_001393.1
MIM 2	130590
UniProt ID 2	P68104

SDS-PAGE

3 µg by SDS-PAGE under reducing condition and visualized by coomassie blue stain.

 Tel: 1-631-559-9269 1-516-512-3133

 Email: info@creative-biomart.com  Fax: 1-631-938-8127

 45-1 Ramsey Road, Shirley, NY 11967, USA