

# Recombinant Full Length Human EEF1A1 Protein

Cat. No. EEF1A1-15HFL Lot. No. (See product label)

## SPECIFICATION

<b>Product Overview</b>	Recombinant Human EEF1A1 Protein without tag was expressed in E. coli.
<b>Species</b>	Human
<b>Source</b>	E.coli
<b>ProteinLength</b>	1-462aa
<b>Description</b>	This gene encodes an isoform of the alpha subunit of the elongation factor-1 complex, which is responsible for the enzymatic delivery of aminoacyl tRNAs to the ribosome. This isoform (alpha 1) is expressed in brain, placenta, lung, liver, kidney, and pancreas, and the other isoform (alpha 2) is expressed in brain, heart and skeletal muscle. This isoform is identified as an autoantigen in 66% of patients with Felty syndrome. This gene has been found to have multiple copies on many chromosomes, some of which, if not all, represent different pseudogenes.
<b>Form</b>	Liquid
<b>AASequence</b>	MGKEKTHINIVVIGHVDSGKSTTTGHLIYKCGGIDKRTIEKFEKEAAEMGKGSFKYAW VLDKKAERERGITIDISLWKFETSKYYVTIIDAPGHRDFIKNMITGTSQADCAVLIVAA GVGEFEAGISKNGQTRHALLAYTLGVKQLIVGVNKMDSTPPYSQKRYEEIVKEVS TYIKKIGYNPDTVAFVPISGWNGDNMLEPSANMPWFKGWKPTRKDGNASGTTLLEA LDCILPPTRPDKPLRLPLQDVYKIGGIGTVPVGRVETGVLKPGMVVTFAPVNVTTTEV KSVEMHHEALSEALPGDNVGFNVKNVSVKDVRRGNVAGDSKNDPPMEAAGFTAQV IILNHPGQISAGYAPVLDCHTAHIACKFAELKEKIDRRSGKKLEDGPKFLKSGDAAIVD

 Tel: 1-631-559-9269 1-516-512-3133

 Email: [info@creative-biomart.com](mailto:info@creative-biomart.com)  Fax: 1-631-938-8127

 45-1 Ramsey Road, Shirley, NY 11967, USA

	MVPGKPMCVESFSDYPPLGRFAVRDMRQTVAVGVKAVDKKAAGAGKITKSAQKAQ KAK
<b>Molecular Mass</b>	50.1 kDa
<b>Purity</b>	> 90% by SDS-PAGE
<b>Application</b>	SDS-PAGE, Denatured
<b>Note</b>	For research use only. This product is not intended or approved for human, diagnostics or veterinary use.
<b>Storage</b>	Can be stored at +2 to +8 centigrade for 1 week. For long term storage, aliquot and store at -20 to -80 centigrade. Avoid repeated freezing and thawing cycles.
<b>Storage Buffer</b>	20mM Tris-HCl buffer (pH 8.0) containing 0.4M urea, 10% glycerol
<b>Concentration</b>	1 mg/mL (determined by Bradford assay)
<b>Reference</b>	1. Meriin AB, Zaarur N, et al. (2012). J Cell Sci. 125(Pt 11):2665-74. 2. Itagaki K, Naito T, et al. (2012). J Biol Chem. 287(19):16037-46.

## GENE INFORMATION

<b>Gene ID</b>	1915
<b>Gene Name</b>	EEF1A1 eukaryotic translation elongation factor 1 alpha 1 [ Homo sapiens (human) ]
<b>Official Symbol</b>	1915
<b>Synonyms</b>	EEF1A1; eukaryotic translation elongation factor 1 alpha 1; CCS3; EF1A; PTI1; CCS-

 Tel: 1-631-559-9269 1-516-512-3133

 Email: [info@creative-biomart.com](mailto:info@creative-biomart.com)  Fax: 1-631-938-8127

 45-1 Ramsey Road, Shirley, NY 11967, USA

3; EE1A1; EEF-1; EEF1A; EF-Tu; EF1A1; LENG7; eEF1A-1; GRAF-1EF; EF1alpha1; elongation factor 1-alpha 1; CTCL tumor antigen; EF-1-alpha-1; EF1a-like protein; cervical cancer suppressor 3; elongation factor 1 alpha subunit; elongation factor Tu; epididymis secretory sperm binding protein; eukaryotic elongation factor 1 A-1; eukaryotic translation elongation factor 1 alpha 1-like 14; glucocorticoid receptor AF-1 specific elongation factor; leukocyte receptor cluster (LRC) member 7; leukocyte receptor cluster member 7; prostate tumor-inducing protein 1; translation elongation factor 1 alpha 1-like 14

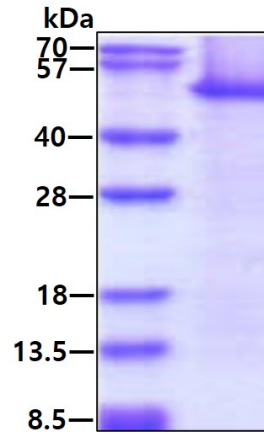
<b>mRNA Refseq</b>	<a href="#">NM_001402</a>
<b>Official Symbol 2</b>	<a href="#">EEF1A1</a>
<b>Gene ID 2</b>	<a href="#">1915</a>
<b>Gene Name 2</b>	<a href="#">EEF1A1 eukaryotic translation elongation factor 1 alpha 1 [ Homo sapiens (human) ]</a>
<b>mRNA Refseq 2</b>	<a href="#">NM_001402</a>
<b>Protein Refseq 2</b>	<a href="#">NP_001393</a>
<b>MIM 2</b>	<a href="#">130590</a>
<b>UniProt ID 2</b>	<a href="#">P68104</a>

 Tel: 1-631-559-9269 1-516-512-3133

 Email: [info@creative-biomart.com](mailto:info@creative-biomart.com)  Fax: 1-631-938-8127

 45-1 Ramsey Road, Shirley, NY 11967, USA

SDS-PAGE



3  $\mu$ g by SDS-PAGE under reducing condition and visualized by coomassie blue stain.

 Tel: 1-631-559-9269 1-516-512-3133

 Email: [info@creative-biomart.com](mailto:info@creative-biomart.com)  Fax: 1-631-938-8127

 45-1 Ramsey Road, Shirley, NY 11967, USA