

Recombinant Human EEF1A1 Protein (Met1-Pro241), N-His tagged

Cat. No. EEF1A1-2029H Lot. No. (See product label)

SPECIFICATION

Product Overview	Recombinant human EEF1A1 (Met1-Pro241) fused with N-His tag was expressed in E. coli.
Species	Human
Source	E.coli
ProteinLength	Met1-Pro241
Form	Lyophilized powder/frozen liquid
Molecular Mass	29.00 kDa
Purity	>90% as determined by SDS-PAGE
Notes	For research use only.
Storage	Use a manual defrost freezer and avoid repeated freeze thaw cycles. Store at 2 to 8 centigrade for one week. Store at -20 to -80 centigrade for twelve months from the date of receipt.
Storage Buffer	0.01M PBS, pH 7.4, 0.02% NLS
Reconstitution	Reconstitute in sterile water for a stock solution.

 Tel: 1-631-559-9269 1-516-512-3133

 Email: info@creative-biomart.com  Fax: 1-631-938-8127

 45-1 Ramsey Road, Shirley, NY 11967, USA

Shipping They are shipped out with dry ice/blue ice unless customers require otherwise.

GENE INFORMATION

Gene Name [EEF1A1 eukaryotic translation elongation factor 1 alpha 1 \[Homo sapiens \(human\) \]](#)

Official Symbol [EEF1A1](#)

Synonyms CCS3; EF1A; PTI1; CCS-3; EE1A1; EEF-1; EEF1A; EF-Tu; LENG7; eEF1A-1; GRAF-1EF; HNGC:16303

Gene ID [1915](#)

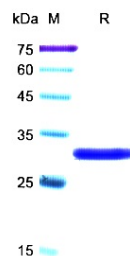
mRNA Refseq [NM_001402](#)

Protein Refseq [NP_001393](#)

MIM [130590](#)

UniProt ID [P68104](#)

SDS-PAGE



 Tel: 1-631-559-9269 1-516-512-3133

 Email: info@creative-biomart.com  Fax: 1-631-938-8127

 45-1 Ramsey Road, Shirley, NY 11967, USA