

Recombinant Human EEF1A1 Protein, GST-tagged

Cat. No. EEF1A1-3065H Lot. No. (See product label)

SPECIFICATION

Product Overview	Human EEF1A1 full-length ORF (NP_001393.1, 1 a.a. - 462 a.a.) recombinant protein with GST-tag at N-terminal.
Species	Human
Source	Wheat Germ
Description	This gene encodes an isoform of the alpha subunit of the elongation factor-1 complex, which is responsible for the enzymatic delivery of aminoacyl tRNAs to the ribosome. This isoform (alpha 1) is expressed in brain, placenta, lung, liver, kidney, and pancreas, and the other isoform (alpha 2) is expressed in brain, heart and skeletal muscle. This isoform is identified as an autoantigen in 66% of patients with Felty syndrome. This gene has been found to have multiple copies on many chromosomes, some of which, if not all, represent different pseudogenes. [provided by RefSeq, Jul 2008]
Molecular Mass	76.5 kDa
AA Sequence	MGKEKTHINIVVIGHVDSGKSTTTGHLIYKCGGIDKRTIEKFEKEAAEMGKGSFKYAW VLDKKAERERGITIDISLWKFETSKYYVTIIDAPGHRDFIKNMITGTSQADCAVLIVAA GVGEFEAGISKNGQTRREHALLAYTLGVKQLIVGVNKMMDSTPPYSQKRYEEIVKEVS TYIKKIGYNPDTVAFVPISGWNGDNMLEPSANMPWFKGWKPTRKDGNASGTTLLEA LDCILPPTRPDKPLRLPLQDVYKIGGIGTVPVGRVETGVLKPGMVVTFAPVNVTTTEV KSVEMHHEALSEALPGDNVGFNVKNVSVKDVRRGNVAGDSKNDPPMEAGFTAQV

 Tel: 1-631-559-9269 1-516-512-3133

 Email: info@creative-biomart.com  Fax: 1-631-938-8127

 45-1 Ramsey Road, Shirley, NY 11967, USA

IILNHPGQISAGYAPVLDCHTAHIACKFAELKEKIDRRSGKKLEDGPKFLKSGDAAIVD
 MVPGKPMCVESFSDYPPLGRFAVRDMRQTVAVGVKAVDKKAAGAGKVTKSAQKA
 QKAK

Applications	Enzyme-linked Immunoabsorbent Assay Western Blot (Recombinant protein) Antibody Production Protein Array
Notes	Best use within three months from the date of receipt of this protein.
Storage	Store at -80 centigrade. Aliquot to avoid repeated freezing and thawing.
Storage Buffer	50 mM Tris-HCl, 10 mM reduced Glutathione, pH=8.0 in the elution buffer.

GENE INFORMATION

Gene Name	EEF1A1 eukaryotic translation elongation factor 1 alpha 1 [Homo sapiens]
Official Symbol	EEF1A1
Synonyms	CCS3; EF1A; PTI1; CCS-3; EE1A1; EEF-1; EEF1A; EF-Tu; LENG7; eEF1A-1; GRAF-1EF; HNGC:16303
Gene ID	1915
mRNA Refseq	NM_001402
Protein Refseq	NP_001393
MIM	130590

 Tel: 1-631-559-9269 1-516-512-3133

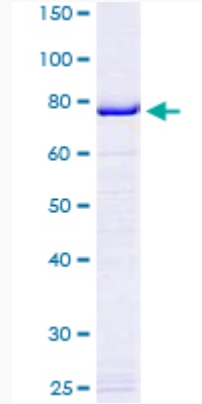
 Email: info@creative-biomart.com  Fax: 1-631-938-8127

 45-1 Ramsey Road, Shirley, NY 11967, USA

UniProt ID

P68104

Quality Control
Testing



12.5% SDS-PAGE Stained with Coomassie Blue.

 Tel: 1-631-559-9269 1-516-512-3133

 Email: info@creative-biomart.com  Fax: 1-631-938-8127

 45-1 Ramsey Road, Shirley, NY 11967, USA