

Active Recombinant Full Length Human EEF1A1 Protein, C-Flag-tagged

Cat. No. EEF1A1-43HFL **Lot. No.** (See product label)

SPECIFICATION

Product Overview	Recombinant Full Length Human EEF1A1 Protein, fused to Flag-tag at C-terminus, was expressed in Mammalian cells.
Species	Human
Source	Mammalian Cells
Description	This gene encodes an isoform of the alpha subunit of the elongation factor-1 complex, which is responsible for the enzymatic delivery of aminoacyl tRNAs to the ribosome. This isoform (alpha 1) is expressed in brain, placenta, lung, liver, kidney, and pancreas, and the other isoform (alpha 2) is expressed in brain, heart and skeletal muscle. This isoform is identified as an autoantigen in 66% of patients with Feltz syndrome. This gene has been found to have multiple copies on many chromosomes, some of which, if not all, represent different pseudogenes.
Form	25 mM Tris HCl, pH 7.3, 100 mM glycine, 10% glycerol.
Bio-activity	ELISA capture for autoantibodies Biolayer interferometry (BLI) assay Binding assay
Molecular Mass	50 kDa
AA Sequence	MGKEKTHINIVVIGHVDSGKSTTTGHLIYKCGGIDKRTIEKFEKEAAEMGKGSFKYAW

 Tel: 1-631-559-9269 1-516-512-3133

 Email: info@creative-biomart.com  Fax: 1-631-938-8127

 45-1 Ramsey Road, Shirley, NY 11967, USA

VLDKKAERERG ITIDISLWKFETSKYYVTIIDAPGHRDFIKNMITGTSQADCAVLIVAA
 GVGEFEAGISKNGQTREHALLA YTLGVKQLIVGVNKMDSTEPYPYSQKRYEEIVKEVS
 TYIKKIGYNPDTVAFVPISGWNGDNMLEPSANMPW FKGWKVTRKDGNASGTTLE
 ALDCILPPTTRPTDKPLRLPLQDVYKIGGIGTVPVGRVETGVLPKGMVTF APVNVTT
 EVKSVMHHEALSEALPGDNVGFNVKNVSVKDVRRGNAVAGDSKNDPPMEAAGFTA
 QVIILNHP GQISAGYAPVLDCHTAHIACKFAELKEKIDRRSGKKLEDGPKFLKSGDAAI
 VDMVPGKPMCVESFSDYPP
 LGRFAVRDMRQTVAVGVKAVDKKAAGAGKVTKSAQKAQKAKTRTRPLEQKLISEE
 DLAANDILDYKDDDDKV

Purity	> 80% as determined by SDS-PAGE and Coomassie blue staining.
Stability	Stable for 12 months from the date of receipt of the product under proper storage and handling conditions. Avoid repeated freeze-thaw cycles.
Storage	Store at -80 centigrade.
Concentration	>50 ug/mL as determined by microplate BCA method.
Preparation	Recombinant protein was captured through anti-DDK affinity column followed by conventional chromatography steps.
Protein Families	Druggable Genome
Full Length	Full L.

GENE INFORMATION

Gene Name	EEF1A1 eukaryotic translation elongation factor 1 alpha 1 [Homo sapiens (human)]
Official Symbol	EEF1A1

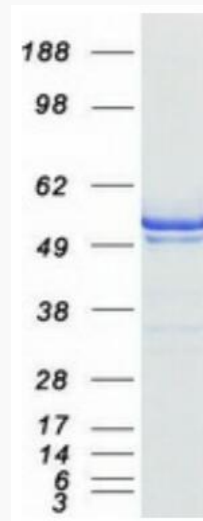
 Tel: 1-631-559-9269 1-516-512-3133

 Email: info@creative-biomart.com  Fax: 1-631-938-8127

 45-1 Ramsey Road, Shirley, NY 11967, USA



Synonyms	CCS3; EF1A; PTI1; CCS-3; EE1A1; EEF-1; EEF1A; EF-Tu; EF1A1; LENG7; eEF1A-1; GRAF-1EF; EF1alpha1
Gene ID	1915
mRNA Refseq	NM_001402.6
Protein Refseq	NP_001393.1
MIM	130590
UniProt ID	P68104



Coomassie blue staining of purified EEF1A1 protein.

Tel: 1-631-559-9269 1-516-512-3133

Email: info@creative-biomart.com Fax: 1-631-938-8127

45-1 Ramsey Road, Shirley, NY 11967, USA