

Recombinant Human EEF1A2 protein, His-tagged

Cat. No. EEF1A2-12290H Lot. No. (See product label)

SPECIFICATION

Product Overview Recombinant Human EEF1A2 protein(NP_001949.1)(Gly213~Lys463), fused to His-tag at N-terminus, was expressed in E. coli.

Species Human

Source E.coli

ProteinLength Gly213~Lys463

Description This gene encodes an isoform of the alpha subunit of the elongation factor-1 complex, which is responsible for the enzymatic delivery of aminoacyl tRNAs to the ribosome. This isoform (alpha 2) is expressed in brain, heart and skeletal muscle, and the other isoform (alpha 1) is expressed in brain, placenta, lung, liver, kidney, and pancreas. This gene may be critical in the development of ovarian cancer.

Form Supplied as lyophilized form in 20mM Tris, 150mM NaCl, pH8.0, containing 1mM EDTA, 1mM DTT, 0.01% sarcosyl, 5% trehalose, and preservative.

Molecular Mass 36kDa as determined by SDS-PAGE reducing conditions.

AA Sequence
 GWKVERKEGNASGVSLLLEALDTILPPTTRPTDKPLRLPLQDVYKIGGIGTVPVGRVET
 GILRPGMVVTFAPVNITTEVKSVEMHHEALSEALPGDNVGFNVKNVSVKDIRRGNVC
 GDSKSDPPQEAQFTSQVIILNHPGQISAGYSPVIDCHTAHIACKFAELKEKIDRRSG
 KKLEDNPKSLKSGDAAIVEMVPGKPMCVEFSQYPPPLGRFAVRDMRQTVAVGVIKN
 VEKKSGGAGKVTKSAQKAQKAGK

 Tel: 1-631-559-9269 1-516-512-3133

 Email: info@creative-biomart.com  Fax: 1-631-938-8127

 45-1 Ramsey Road, Shirley, NY 11967, USA

Endotoxin	<1.0EU per 1g (determined by the LAL method)
Purity	> 90%
Applications	Positive Control; Immunogen; SDS-PAGE; WB. If bio-activity of the protein is needed, please check active protein.
Notes	<p>The possible reasons that the actual band size differs from the predicted are as follows:</p> <ol style="list-style-type: none"> 1. Splice variants: Alternative splicing may create different sized proteins from the same gene. 2. Relative charge: The composition of amino acids may affects the charge of the protein. 3. Post-translational modification: Phosphorylation, glycosylation, methylation etc. 4. Post-translation cleavage: Many proteins are synthesized as pro-proteins, and then cleaved to give the active form. 5. Polymerization of the target protein: Dimerization, multimerization etc.
Stability	The thermal stability is described by the loss rate. The loss rate was determined by accelerated thermal degradation test, that is, incubate the protein at 37°C for 48h, and no obvious degradation and precipitation were observed. The loss rate is less than 5% within the expiration date under appropriate storage condition.
Storage	Avoid repeated freeze/thaw cycles. Store at 2-8°C for one month. Aliquot and store at -80°C for 12 months.
Reconstitution	Reconstitute in sterile ddH ₂ O.

GENE INFORMATION

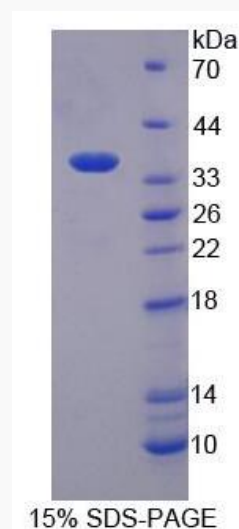
 Tel: 1-631-559-9269 1-516-512-3133

 Email: info@creative-biomart.com  Fax: 1-631-938-8127

 45-1 Ramsey Road, Shirley, NY 11967, USA

Gene Name	EEF1A2 eukaryotic translation elongation factor 1 alpha 2 [Homo sapiens (human)]
Official Symbol	EEF1A2
Synonyms	STN; EF1A; EEF1AL; EF-1-alpha-2; HS1; STNL; Statin-Like; Statin-S1; Eukaryotic elongation factor 1 A-2
Gene ID	1917
mRNA Refseq	NM_001958.5
Protein Refseq	NP_001949.1
MIM	602959
UniProt ID	Q05639

**SDS-PAGE of
EEF1A2-12290H**



Tel: 1-631-559-9269 1-516-512-3133

Email: info@creative-biomart.com Fax: 1-631-938-8127

45-1 Ramsey Road, Shirley, NY 11967, USA