

Recombinant Human EEF1A2 Protein, GST-tagged

Cat. No. EEF1A2-3067H Lot. No. (See product label)

SPECIFICATION

Product Overview	Human EEF1A2 full-length ORF (NP_001949.1, 1 a.a. - 463 a.a.) recombinant protein with GST-tag at N-terminal.
Species	Human
Source	Wheat Germ
Description	This gene encodes an isoform of the alpha subunit of the elongation factor-1 complex, which is responsible for the enzymatic delivery of aminoacyl tRNAs to the ribosome. This isoform (alpha 2) is expressed in brain, heart and skeletal muscle, and the other isoform (alpha 1) is expressed in brain, placenta, lung, liver, kidney, and pancreas. This gene may be critical in the development of ovarian cancer. [provided by RefSeq, Mar 2014]
Molecular Mass	76.9 kDa
AA Sequence	MGKEKTHINIVVIGHVDSGKSTTTGHLIYKCGGIDKRTIEKFEKEAAEMGKGSFKYAW VLDKKAERERGITIDISLWKFETTKYYITIIDAPGHRDFIKNMITGTSQADCAVLIVAAG VGEFEAGISKNGQTRHALLAYTLGVKQLIVGVNKMDSTEPAYSEKRYDEIVKEVSA YIKKIGYNPATVPFVPISGWHGDNMLEPSPNMPWFKGWKVERKEGNASGVSLLLEAL DTILPPTTRPTDKPLRLPLQDVYKIGGIGTVPVGRVETGILRPGMVVTFAPVNITTEVKS VEMHHEALSEALPGDNVGFNVKNVSVKDIRRGNVCGDSKSDPPQEAAQFTSQVIL NHPGQISAGYSPVIDCHTAHIACKFAELKEKIDRRSGKKLEDNPKSLKSGDAAIVEMV PGKPMCVEFSQYPPLGRFAVRDMRQTVAVGVIKNVEKKSSGGAGKVTKSAQKAQK

 Tel: 1-631-559-9269 1-516-512-3133

 Email: info@creative-biomart.com  Fax: 1-631-938-8127

 45-1 Ramsey Road, Shirley, NY 11967, USA

	AGK
Applications	Enzyme-linked Immunoabsorbent Assay Western Blot (Recombinant protein) Antibody Production Protein Array
Notes	Best use within three months from the date of receipt of this protein.
Storage	Store at -80 centigrade. Aliquot to avoid repeated freezing and thawing.
Storage Buffer	50 mM Tris-HCl, 10 mM reduced Glutathione, pH=8.0 in the elution buffer.
GENE INFORMATION	
Gene Name	EEF1A2 eukaryotic translation elongation factor 1 alpha 2 [Homo sapiens]
Official Symbol	EEF1A2
Synonyms	EEF1A2; eukaryotic translation elongation factor 1 alpha 2; statin , statin like , STN, STNL; elongation factor 1-alpha 2; EEF1AL; HS1; eEF1A-2; statin S1; statin-S1; elongation factor-1 alpha; eukaryotic elongation factor 1 A-2; STN; EF1A; STNL; EF-1-alpha-2; FLJ41696;
Gene ID	1917
mRNA Refseq	NM_001958
Protein Refseq	NP_001949
MIM	602959

 Tel: 1-631-559-9269 1-516-512-3133

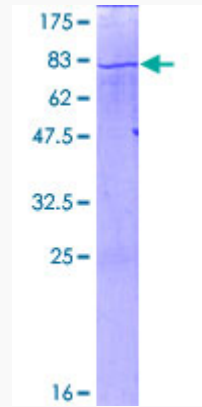
 Email: info@creative-biomart.com  Fax: 1-631-938-8127

 45-1 Ramsey Road, Shirley, NY 11967, USA

UniProt ID

Q05639

Quality Control
Testing



12.5% SDS-PAGE Stained with Coomassie Blue.

 Tel: 1-631-559-9269 1-516-512-3133

 Email: info@creative-biomart.com  Fax: 1-631-938-8127

 45-1 Ramsey Road, Shirley, NY 11967, USA