

# Active Recombinant Full Length Human EEF1D Protein, C-Flag-tagged

**Cat. No.** EEF1D-537HFL    **Lot. No.** (See product label)

## SPECIFICATION

<b>Product Overview</b>	Recombinant Full Length Human EEF1D Protein, fused to Flag-tag at C-terminus, was expressed in Mammalian cells.
<b>Species</b>	Human
<b>Source</b>	Mammalian Cells
<b>Description</b>	This gene encodes a subunit of the elongation factor-1 complex, which is responsible for the enzymatic delivery of aminoacyl tRNAs to the ribosome. This subunit, delta, functions as guanine nucleotide exchange factor. It is reported that following HIV-1 infection, this subunit interacts with HIV-1 Tat. This interaction results in repression of translation of host cell proteins and enhanced translation of viral proteins. Several alternatively spliced transcript variants encoding multiple isoforms have been found for this gene. Related pseudogenes have been defined on chromosomes 1, 6, 7, 9, 11, 13, 17, 19.
<b>Form</b>	25 mM Tris HCl, pH 7.3, 100 mM glycine, 10% glycerol.
<b>Bio-activity</b>	Biolayer interferometry (BLI) assay
<b>Molecular Mass</b>	30.9 kDa
<b>AA Sequence</b>	MRSKGASCTLETVWEDKHKYEEAERRFYEHEATQAAASAQQLPAEGPAMNGPGQ DDPEDADEAEAPDGGG RRDPRKSQDSRKPLQKKRKRSPKSGLGPADLALLGLSAE

 Tel: 1-631-559-9269    1-516-512-3133

 Email: [info@creative-biomart.com](mailto:info@creative-biomart.com)     Fax: 1-631-938-8127

 45-1 Ramsey Road, Shirley, NY 11967, USA

RVWLDKSLFDQAESSYRQKLADVAAQAAWPP ALAPWGLCTHGNQVACHHVTWGI  
 WVNKSSFDQAERAFVEWSQALLAPEGSRRQGTPTNGQQVAVPDLAH QPSPPVN  
 GQPPLGSLQALVREVVLEKPRYDAAERGFYEALFDGHPPGKVRLQERAGLAEGAR  
 RGRRRRRG RNILGNKRAGLRRADGEAPSALPYCYFLQKDAEAPWLSKPAYDSAEC  
 RHAAEALRVAWCLEAASLSHRP GPRSGLSVSSLRPNRKMATNFLAHEKIWFDFK  
 KYDDAERRFYEQMNGPVAGASRQENGASVILRDIARAR ENIQKSLAGSSGPGASS  
 GTSGDHGELVVRIASLEVENQSLRGVVQELQQAISKLEARLNVLEKSSPGHRA TAP  
 QTQHVSPMRQVEPPAKKPATPAEDDEDDIDLFGSDNEEEDKEAAQLREERLRQY  
 AEKKAKKPALVA KSSILLDVKPWDDDETMAQLEACVRSIQLDGLVWGASKLVPVG  
 GIRKLQIQCVVEDDKVGTDLLEEEIT  
 KFEEHVQSVDIAAFNKITRTRPLEQKLISEEDLAANDILDYKDDDDKV

**Purity** > 80% as determined by SDS-PAGE and Coomassie blue staining.

**Stability** Stable for 12 months from the date of receipt of the product under proper storage and handling conditions. Avoid repeated freeze-thaw cycles.

**Storage** Store at -80 centigrade.

**Concentration** >50 ug/mL as determined by microplate BCA method.

**Preparation** Recombinant protein was captured through anti-DDK affinity column followed by conventional chromatography steps.

**Full Length** Full L.

## GENE INFORMATION

**Gene Name** [EEF1D eukaryotic translation elongation factor 1 delta \[ Homo sapiens \(human\) \]](#)

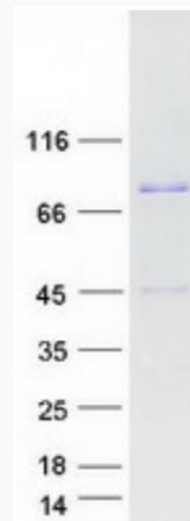
**Official Symbol** [EEF1D](#)

 Tel: 1-631-559-9269 1-516-512-3133

 Email: [info@creative-biomart.com](mailto:info@creative-biomart.com)  Fax: 1-631-938-8127

 45-1 Ramsey Road, Shirley, NY 11967, USA

<b>Synonyms</b>	EF1D; EF-1D; FP1047
<b>Gene ID</b>	1936
<b>mRNA Refseq</b>	NM_001960.7
<b>Protein Refseq</b>	NP_001951.2
<b>MIM</b>	130592
<b>UniProt ID</b>	P29692



Coomassie blue staining of purified EEF1D protein.

 Tel: 1-631-559-9269 1-516-512-3133

 Email: [info@creative-biomart.com](mailto:info@creative-biomart.com)  Fax: 1-631-938-8127

 45-1 Ramsey Road, Shirley, NY 11967, USA