

## Recombinant Human EEF1G protein, His-tagged

Cat. No. EEF1G-01H Lot. No. (See product label)

### SPECIFICATION

<b>Product Overview</b>	Recombinant human EEF1G protein (1-437aa), fused to His-tag at N-terminus, was expressed in E. coli and purified by using conventional chromatography techniques.
<b>Species</b>	Human
<b>Source</b>	E.coli
<b>ProteinLength</b>	1-437 a.a.
<b>Description</b>	This gene encodes a subunit of the elongation factor-1 complex, which is responsible for the enzymatic delivery of aminoacyl tRNAs to the ribosome. This subunit contains an N-terminal glutathione transferase domain, which may be involved in regulating the assembly of multisubunit complexes containing this elongation factor and aminoacyl-tRNA synthetases.
<b>Form</b>	Liquid
<b>Molecular Mass</b>	52.5 kDa (460aa)
<b>AA Sequence</b>	MGSSHHHHHSSGLVPRGSHMGSMAGTLYTYPENWRAFKALIAAQYSGAQVRVL SAPPHFHFGQTNRTPEFLRKFPAGKVPAFEGDDGFCVFESNAIAYYSNEELRGST PEAAAQVVQWVSFADSDIVPPASTWVFPTLGIMHHNKQATENAKEEVRRLGLLDAY LKTRTFLVGERVTLADITVVCTLLWLYKQVLEPSFRQAFPNTNRWFLTCINQPQFRA VLGEVKLCEKMAQFDAQKFAETQPKKDTPRKEKGSREEKQKPQAERKEEKAAAP APEEEMDECEQALAAEPKAKDPFAHLPKSTFVLDEFKRKYSNEDTLSVALPYFWEH

 Tel: 1-631-559-9269 1-516-512-3133

 Email: [info@creative-biomart.com](mailto:info@creative-biomart.com)  Fax: 1-631-938-8127

 45-1 Ramsey Road, Shirley, NY 11967, USA

FDKDGWSLWYSEYRFPEELTQTFMSCNLITGMFQRLDKLRKNAFASVILFGTNNSS  
SISGVVWVFRGQELAFPLSPDWQVDYESYTWKLDPGSEETQTLVREYFSWEGAFQ  
HVGKAFNQGKIFK

**Purity** > 90% by SDS-PAGE

**Applications** SDS-PAGE

**Storage** Can be stored at +2 to +8 centigrade for 1 week. For long term storage, aliquot and store at -20 to -80 centigrade. Avoid repeated freezing and thawing cycles.

**Concentration** 1 mg/mL (determined by Bradford assay)

**Storage Buffer** 20 mM Tris-HCl buffer (pH 8.0) containing 0.15 M NaCl, 10% glycerol, 1 mM DTT

## GENE INFORMATION

**Gene Name** [EEF1G eukaryotic translation elongation factor 1 gamma \[ Homo sapiens \(human\) \]](#)

**Official Symbol** [EEF1G](#)

**Synonyms** EEF1G; eukaryotic translation elongation factor 1 gamma; EF1G; GIG35; elongation factor 1-gamma; EF-1-gamma; PRO1608; eEF-1B gamma; pancreatic tumor-related protein; translation elongation factor eEF-1 gamma chain

**Gene ID** [1937](#)

**mRNA Refseq** [NM\\_001404](#)

**Protein Refseq** [NP\\_001395](#)

 Tel: 1-631-559-9269 1-516-512-3133

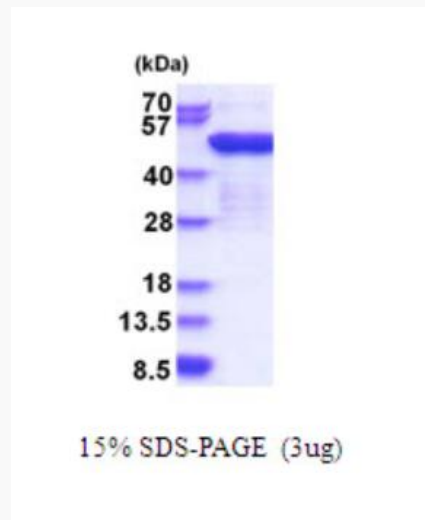
 Email: [info@creative-biomart.com](mailto:info@creative-biomart.com)  Fax: 1-631-938-8127

 45-1 Ramsey Road, Shirley, NY 11967, USA

MIM 130593

UniProt ID Q53YD7

SDS-PAGE



3  $\mu$ g by SDS-PAGE under reducing condition and visualized by coomassie blue stain.

Tel: 1-631-559-9269 1-516-512-3133

Email: [info@creative-biomart.com](mailto:info@creative-biomart.com) Fax: 1-631-938-8127

45-1 Ramsey Road, Shirley, NY 11967, USA