

Recombinant Human EEF1G Protein, Myc/DDK-tagged, C13 and N15-labeled

Cat. No. EEF1G-4783H Lot. No. (See product label)

SPECIFICATION

Product Overview

EEF1G MS Standard C13 and N15-labeled recombinant protein (NP_001395) with a C-terminal MYC/DDK tag, was expressed in HEK293 cells.

Species

Human

Source

HEK293

Description

This gene encodes a subunit of the elongation factor-1 complex, which is responsible for the enzymatic delivery of aminoacyl tRNAs to the ribosome. This subunit contains an N-terminal glutathione transferase domain, which may be involved in regulating the assembly of multisubunit complexes containing this elongation factor and aminoacyl-tRNA synthetases.

Molecular Mass

49.9 kDa

AA Sequence

MAAGTLYTYPENWRAFKALIAAQYSGAQVRVLSAPPHFHFGQTNRTPFLRKFPAG
 KVPAFEGDDGFCVFESNAIAYYVSNEELRGSTPEAAAQVQWVSFADSDIVPPAST
 WVFPTLGIMHHNKQATENAKEEVRRILGLLDAYLKTRTFLVGERVTLADITVVCTLLW
 LYKQVLEPSFRQAFPNTNRWFLTCINQPQFRAVLGEVKLCEKMAQFDAKKFAETQP
 KKDTPRKEKGSREEKQKPQAERKEEKAAAPAPEEEMDECEQALAAEPKAKDPFA
 HLPKSTFVLDEFKRKYSNEDTSLVALPYFWEHFDKDGWLSLWYSEYRFPEELTQTFM
 SCNLITGMFQRLDKLRKNAFASVILFGTNNSSSISGVVWVFRGQELAFPLSPDWQVDY
 ESYTWRKLDPGSEETQTLVREYFSWEGAFQHVGKAFNQGKIFKTRTRPLEQKLISE

 Tel: 1-631-559-9269 1-516-512-3133

 Email: info@creative-biomart.com  Fax: 1-631-938-8127

 45-1 Ramsey Road, Shirley, NY 11967, USA

EDLAANDILDYKDDDDKV

Purity > 80% as determined by SDS-PAGE and Coomassie blue staining

Stability Stable for 3 months from receipt of products under proper storage and handling conditions.

Storage Store at -80 centigrade. Avoid repeated freeze-thaw cycles.

Concentration 50 µg/mL as determined by BCA

Storage Buffer 100 mM glycine, 25 mM Tris-HCl, pH 7.3.

GENE INFORMATION

Gene Name [EEF1G eukaryotic translation elongation factor 1 gamma \[Homo sapiens \(human\) \]](#)

Official Symbol [EEF1G](#)

Synonyms EEF1G; eukaryotic translation elongation factor 1 gamma; elongation factor 1-gamma; EF1G; PRO1608; EF-1-gamma; eEF-1B gamma; pancreatic tumor-related protein; translation elongation factor eEF-1 gamma chain; GIG35;

Gene ID [1937](#)

mRNA Refseq [NM_001404](#)

Protein Refseq [NP_001395](#)

MIM [130593](#)

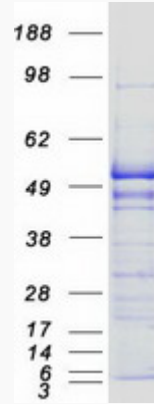
 Tel: 1-631-559-9269 1-516-512-3133

 Email: info@creative-biomart.com  Fax: 1-631-938-8127

 45-1 Ramsey Road, Shirley, NY 11967, USA

UniProt ID P26641

SDS-PAGE



 Tel: 1-631-559-9269 1-516-512-3133

 Email: info@creative-biomart.com  Fax: 1-631-938-8127

 45-1 Ramsey Road, Shirley, NY 11967, USA