

# Active Recombinant Full Length Human EEF1G Protein, C-Flag-tagged

**Cat. No.** EEF1G-566HFL    **Lot. No.** (See product label)

## SPECIFICATION

<b>Product Overview</b>	Recombinant Full Length Human EEF1G Protein, fused to Flag-tag at C-terminus, was expressed in Mammalian cells.
<b>Species</b>	Human
<b>Source</b>	Mammalian Cells
<b>Description</b>	This gene encodes a subunit of the elongation factor-1 complex, which is responsible for the enzymatic delivery of aminoacyl tRNAs to the ribosome. This subunit contains an N-terminal glutathione transferase domain, which may be involved in regulating the assembly of multisubunit complexes containing this elongation factor and aminoacyl-tRNA synthetases.
<b>Form</b>	25 mM Tris HCl, pH 7.3, 100 mM glycine, 10% glycerol.
<b>Bio-activity</b>	Biolayer interferometry (BLI) assay
<b>Molecular Mass</b>	49.9 kDa
<b>AA Sequence</b>	MAAGTLTYTPENWRAFKALIAAQYSGAQVRVLSAPPHFHFGQTNRTPPEFLRKFPAG KVPAFEGDDGFCVF ESNAIYYVSNEELRGSTPEAAAQVVQWVSFADSDIVPPAST WVFPTLGIMHHNKQATENAKEEVRRILG LLDAYLKTRTFLVGERVTLADITVVCTLL WLYKQVLEPSFRQAFPNTNRWFLTCINQPQFRAVLGEVKLC EKMAQFDAKKFAET QPKKDTPRKEKGSREEKQKPQAERKEEKKAAAPAPEEEMDECEQALAAEPKAKDP

 Tel: 1-631-559-9269    1-516-512-3133

 Email: [info@creative-biomart.com](mailto:info@creative-biomart.com)     Fax: 1-631-938-8127

 45-1 Ramsey Road, Shirley, NY 11967, USA

F AHLPKSTFVLDEFKRRKYSNEDTLSVALPYFWEHFDKDGWLSLWYSEYRFPEELTQT  
 FMSCNLITGMFQRLD KLRKNAFASVILFGTNNSSSISGVVWVFRGQELAFPLSPDWQ  
 VDYESYTWKLDPGSEETQTLVREYFSWE  
 GAFQHVKGAFNQGKIFKTRTRPLEQKLISEEDLAANDILDYKDDDDKV

<b>Purity</b>	> 80% as determined by SDS-PAGE and Coomassie blue staining.
<b>Stability</b>	Stable for 12 months from the date of receipt of the product under proper storage and handling conditions. Avoid repeated freeze-thaw cycles.
<b>Storage</b>	Store at -80 centigrade.
<b>Concentration</b>	>50 ug/mL as determined by microplate BCA method.
<b>Preparation</b>	Recombinant protein was captured through anti-DDK affinity column followed by conventional chromatography steps.
<b>Full Length</b>	Full L.

## GENE INFORMATION

<b>Gene Name</b>	EEF1G eukaryotic translation elongation factor 1 gamma [ Homo sapiens (human) ]
<b>Official Symbol</b>	EEF1G
<b>Synonyms</b>	EF1G; GIG35
<b>Gene ID</b>	1937
<b>mRNA Refseq</b>	NM_001404.5

 Tel: 1-631-559-9269 1-516-512-3133

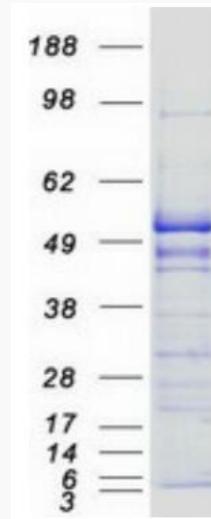
 Email: [info@creative-biomart.com](mailto:info@creative-biomart.com)  Fax: 1-631-938-8127

 45-1 Ramsey Road, Shirley, NY 11967, USA

**Protein Refseq** NP\_001395.1

**MIM** 130593

**UniProt ID** P26641



Coomassie blue staining of purified EEF1G protein.

 Tel: 1-631-559-9269 1-516-512-3133

 Email: [info@creative-biomart.com](mailto:info@creative-biomart.com)  Fax: 1-631-938-8127

 45-1 Ramsey Road, Shirley, NY 11967, USA