

Recombinant Chinese hamster EEF2 protein(1-365aa), His&Myc-tagged

Cat. No. EEF2-122C Lot. No. (See product label)

SPECIFICATION

Product Overview	Recombinant Chinese hamster EEF2 protein(P09445)(1-365aa), fused with N-terminal His tag and C-terminal Myc tag, was expressed in E.coli.
Species	Chinese hamster
Source	E.coli
ProteinLength	1-365aa
Form	If the delivery form is liquid, the default storage buffer is Tris/PBS-based buffer, 5%-50% glycerol. If the delivery form is lyophilized powder, the buffer before lyophilization is Tris/PBS-based buffer, 6% Trehalose, pH 8.0.
Molecular Mass	48.0 kDa
Purity	Greater than 85% as determined by SDS-PAGE.
Storage	Store at -20°C/-80°C upon receipt, aliquoting is necessary for multiple use. Avoid repeated freeze-thaw cycles.
Reconstitution	We recommend that this vial be briefly centrifuged prior to opening to bring the contents to the bottom. Please reconstitute protein in deionized sterile water to a concentration of 0.1-1.0 mg/mL. We recommend to add 5-50% of glycerol (final concentration) and aliquot for long-term storage at -20°C/-80°C.

 Tel: 1-631-559-9269 1-516-512-3133

 Email: info@creative-biomart.com  Fax: 1-631-938-8127

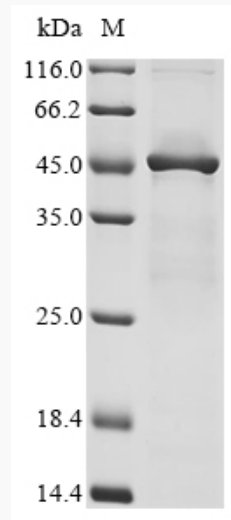
 45-1 Ramsey Road, Shirley, NY 11967, USA



AA Sequence

MVNFTVDQIRAIMDKEANIRNMSVIAHVDHGKSTLTDSLVCAGIIASARAGETRFTD
TRKDEQERCITIKSTAISLFYELSENDLNFIKQSKDGGFLINLIDSPGHVDFSSEVTAA
LRVTDGALVVVDCVSGVCVQTETVLRQAIAERIKPVLMMNKMDRALLELQLEPEELY
QTFQRIVENVNVIISTYGEGESGPMGNIMIDPVLGTVGFGSGLHGWAFTLKQFAEMY
VAKFAAKGEGQLGPAERAKKVEDMMKKLWGDYFDPANGKFSKSANSPDGKKLP
RTFCQLILDPIFKVFDPIMNFRKEETAKLIEKLDIKLDSKDKKEGKPLLKAVMRRWLP
AGDALLQMITIHLPSVTAQ

SDS-PAGE



Tel: 1-631-559-9269 1-516-512-3133

Email: info@creative-biomart.com Fax: 1-631-938-8127

45-1 Ramsey Road, Shirley, NY 11967, USA