

Recombinant Mouse EEF2 Protein, His&Myc-tagged

Cat. No. EEF2-1383M Lot. No. (See product label)

SPECIFICATION

Product Overview	Recombinant Mouse EEF2 Protein(P58252)(2-858 aa), fused with N-terminal His tag and C-terminal Myc tag, was expressed in E.coli.
Species	Mouse
Source	E.coli
ProteinLength	2-858 aa
Form	If the delivery form is liquid, the default storage buffer is Tris/PBS-based buffer, 5%-50% glycerol. If the delivery form is lyophilized powder, the buffer before lyophilization is Tris/PBS-based buffer, 6% Trehalose.
Molecular Mass	102.6 kDa
AASequence	VNFTVDQIRAIMDKKANIRNMSVIAHVDHGKSTLTDSLVCAGIIASARAGETRFTDTR KDEQERCITIKSTAISLFYELSENDLNFQKQSKDGGSGFLINLIDSPGHVDFSSEVTAALR VTDGALVVVDCVSGVCVQTETVLRQAI AERIKPVLMMNKMDRALLELQLEPEELYQT FQRIVENVNVIISTYGEGESGPMGNIMIDPVLGTVGFGSGLHGWAFTLKQFAEMYVA KFAAKGEGQLSAAERAKKVEDMMKKLWGDRYFDPANGKFSKANSPPDGKKLPRTF CQLILDPIFKVFDAIMNFRKEETAKLIEKLDIKLDSKDKKEGKPLLKAVMRRWLPAGD ALLQMITIHLPSVTAQKYRCELLYEGPPDDEAAMGIKSCDPKGPLMMYISKMVPTS DKGRFYAFGRVFSGVVSTGLKVRIMGPNYTPGKKEDLYLKPIQRTILMMGRYVEPIE DVPCGNIVGLVGVDQFLVKTGTITTFEHAHNMRVMKFSVSPVVRVAVEAKNPADLPK LVEGLKRLAKSDPMVQCIIIEESGEHIIAGAGELHLEICLKDLEEDHACIPIKKSDPVVSY

 Tel: 1-631-559-9269 1-516-512-3133

 Email: info@creative-biomart.com  Fax: 1-631-938-8127

 45-1 Ramsey Road, Shirley, NY 11967, USA

RETVSEESNVLCLSKSPNKHNRLYMKARPPFDGLAEDIDKGEVSARQELKARARYL
 AEKEYWDVAEARKIWCFGPDGTGPNILTDITKGVQYLNEIKDSVVAGFQWATKEGAL
 CEENMRGVRFVDVHDVTLHADAIHRGGGQIIPARRCLYASVLTAPRLMEPIYLVEIQ
 CPEQVVGGIYGVLNRKRGHVFEESQVAGTPMFVVKAYLPVNESFGFTADLRNTGG
 QAFPQCVFDHWQILPGDPFDNSSRPSQVVAETRRKRLKEGIPALDNFLDKL

Purity Greater than 85% as determined by SDS-PAGE.

Storage Store at -20°C/-80°C upon receipt, aliquoting is necessary for mutiple use. Avoid repeated freeze-thaw cycles.

Reconstitution It is recommended that sterile water be added to the vial to prepare a stock solution of 0.2 ug/ul. Centrifuge the vial at 4°C before opening to recover the entire contents.

GENE INFORMATION

Gene Name [Eef2 eukaryotic translation elongation factor 2 \[Mus musculus \]](#)

Official Symbol [EEF2](#)

Synonyms EEF2; eukaryotic translation elongation factor 2; elongation factor 2; Ef-2; MGC98463;

Gene ID [13629](#)

mRNA Refseq [NM_007907](#)

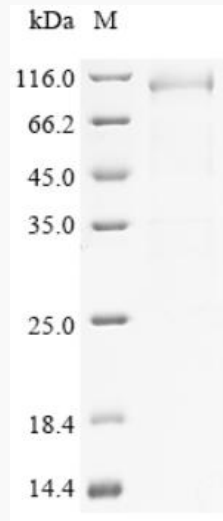
Protein Refseq [NP_031933](#)

 Tel: 1-631-559-9269 1-516-512-3133

 Email: info@creative-biomart.com  Fax: 1-631-938-8127

 45-1 Ramsey Road, Shirley, NY 11967, USA

SDS-PAGE



 Tel: 1-631-559-9269 1-516-512-3133

 Email: info@creative-biomart.com  Fax: 1-631-938-8127

 45-1 Ramsey Road, Shirley, NY 11967, USA