

Recombinant Human EEF2 Protein (Val509-Leu858), N-His tagged

Cat. No. EEF2-2031H Lot. No. (See product label)

SPECIFICATION

Product Overview	Recombinant human EEF2 (Val509-Leu858) fused with N-His tag was expressed in E. coli.
Species	Human
Source	E.coli
ProteinLength	Val509-Leu858
Form	Lyophilized powder/frozen liquid
Molecular Mass	41.28 kDa
Purity	>90% as determined by SDS-PAGE
Notes	For research use only.
Storage	Use a manual defrost freezer and avoid repeated freeze thaw cycles. Store at 2 to 8 centigrade for one week. Store at -20 to -80 centigrade for twelve months from the date of receipt.
Storage Buffer	0.01M PBS, pH 7.4, 0.02% NLS
Reconstitution	Reconstitute in sterile water for a stock solution.

 Tel: 1-631-559-9269 1-516-512-3133

 Email: info@creative-biomart.com  Fax: 1-631-938-8127

 45-1 Ramsey Road, Shirley, NY 11967, USA

Shipping They are shipped out with dry ice/blue ice unless customers require otherwise.

GENE INFORMATION

Gene Name [EEF2 eukaryotic translation elongation factor 2 \[Homo sapiens \(human\) \]](#)

Official Symbol [EEF2](#)

Synonyms EEF2; eukaryotic translation elongation factor 2; EF2; elongation factor 2; EEF 2; polypeptidyl tRNA translocase; polypeptidyl-tRNA translocase; EF-2; EEF-2;

Gene ID [1938](#)

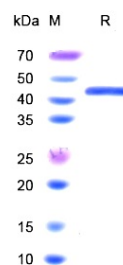
mRNA Refseq [NM_001961](#)

Protein Refseq [NP_001952](#)

MIM [130610](#)

UniProt ID [P13639](#)

SDS-PAGE



 Tel: 1-631-559-9269 1-516-512-3133

 Email: info@creative-biomart.com  Fax: 1-631-938-8127

 45-1 Ramsey Road, Shirley, NY 11967, USA