

Recombinant Human EEF2 Protein, His-tagged

Cat. No. EEF2-2836H Lot. No. (See product label)

SPECIFICATION

Product Overview	Recombinant Human EEF2 Protein(P13639)(2-858 aa), fused with N-terminal His tag, was expressed in Baculovirus.
Species	Human
Source	Baculovirus
ProteinLength	2-858 aa
Form	If the delivery form is liquid, the default storage buffer is Tris/PBS-based buffer, 5%-50% glycerol. If the delivery form is lyophilized powder, the buffer before lyophilization is Tris/PBS-based buffer, 6% Trehalose.
Molecular Mass	96.2 kDa
AASequence	VNFTVDQIRAIMDKKANIRNMSVIAHVDHGKSTLTDSLVCAGIIASARAGETRFTDTR KDEQERCITIKSTAISLFYELSENDLNFIKQSKDGAGFLINLIDSPGHVDFSSEVTAALR VTDGALVVVDCVSGVCVQTETVLRQAI AERIKPVLMMNKMDRALLELQLEPEELYQT FQRIVENVNVIISTYGEGESGPMGNIMIDPVLGTVGFSGSLHGWAFTLKQFAEMYVA KFAAKGEGQLGPAERAKKVEDMMKKLWGDYFDPANGKFSKSATSPEGKKLPRTF CQLILDPIFKVFDAIMNFKKEETAKLIEKLDIKL DSEDKDKGKPLLKAVMRRWLPAGD ALLQMITIHLPSVTAQKYRCELLYEGPPDDEAAMGIKSCDPKGPLMMYISKMVPTS DKGRFYAFGRVFSGLVSTGLKVRIMGPNYTPGKKEDLYLKPIQRTILMMGRYVEPIE DVPCGNIVGLVGVDQFLVKTGTITTFEHAHNMRVMKFSVSPVVRVAVEAKNPADLPK LVEGLKRLAKSDPMVQCII EESGEHIIAGAGELHLEICLKDLEEDHACIPIKKSDPVVSY

 Tel: 1-631-559-9269 1-516-512-3133

 Email: info@creative-biomart.com  Fax: 1-631-938-8127

 45-1 Ramsey Road, Shirley, NY 11967, USA

RETVSEESNVLCLSKSPNKHNRLYMKARPPFDGLAEDIDKGEVSARQELKQRARYL
 AEKYEWDVAEARKIWCFGPDGTGPNILTDITKGVQYLNEIKDSVVAGFQWATKEGAL
 CEENMRGVRFVDVHDVTLHADAIHRGGGQIIPARRCLYASVLTAQPRLMEPIYLVEIQ
 CPEQVVGGIYGVLNRKRGHVFEESQVAGTPMFVVKAYLPVNESFGFTADLRNTGG
 QAFPQCVFDHWQILPGDPFDNSSRPSQVVAETRKRKGLKEGIPALDNFLDKL

Purity Greater than 90% as determined by SDS-PAGE.

Storage Store at -20°C/-80°C upon receipt, aliquoting is necessary for mutiple use. Avoid repeated freeze-thaw cycles.

Reconstitution We recommend that this vial be briefly centrifuged prior to opening to bring the contents to the bottom. Please reconstitute protein in deionized sterile water to a concentration of 0.1-1.0 mg/mL. We recommend to add 5-50% of glycerol (final concentration) and aliquot for long-term storage at -20°C/-80°C. Our default final concentration of glycerol is 50%.

GENE INFORMATION

Gene Name [EEF2 eukaryotic translation elongation factor 2 \[Homo sapiens \]](#)

Official Symbol [EEF2](#)

Synonyms EEF2; eukaryotic translation elongation factor 2; EF2; elongation factor 2; EEF 2; polypeptidyl tRNA translocase; polypeptidyl-tRNA translocase; EF-2; EEF-2;

Gene ID [1938](#)

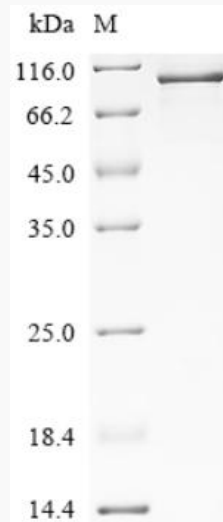
mRNA Refseq [NM_001961](#)

Protein Refseq [NP_001952](#)

 Tel: 1-631-559-9269 1-516-512-3133

 Email: info@creative-biomart.com  Fax: 1-631-938-8127

 45-1 Ramsey Road, Shirley, NY 11967, USA

MIM 130610**UniProt ID** P13639**SDS-PAGE** Tel: 1-631-559-9269 1-516-512-3133 Email: info@creative-biomart.com  Fax: 1-631-938-8127 45-1 Ramsey Road, Shirley, NY 11967, USA